

### From The Director's Office:

The month of March has been a whirlwind of activity in the Public Works Department. In addition to completing core work responsibilities, staff performed extra duties related to the City's COVID-19 response. Just a few of the additional responsibilities include participation in the Emergency Operations Center, multiple cleanings per day of contact points around city facilities, posting warning signs in restrooms, entry doors, and parks, ensuring disinfection and paper products are available for staff use and tracking time and costs associated with COVID-19.

As essential employees, public works staff continue to report to work in person each day to maintain the City's infrastructure. To help protect our employees while they are at work, we have implemented several rules for staff such as limiting the number of people in the lunch room or conference room, allowing only one person per vehicle, using the vehicles as mobile offices, and keeping social distancing while in the office, which is a challenge even under normal circumstances due to the number of staff in a small office area.

This is a difficult time for us all and I am proud of the commitment of the public work staff to continue to provide our citizens with the same level of service they have come to expect.

**Best Regards,**  
**Delora Kerber**  
**Public Works Director**



# Public Works staff completing core duties



## Facilities

### “Springing” into Action

Winter is officially over, making way for Facilities Maintenance Specialist Daniel Morena to “Spring” into action. Daniel has been working on several planting projects around the City. One of those projects was the replacement of the Cherry trees located on the west side of the City Hall building.

Daniel had been concerned about the health of the trees for some time and after realizing that he could push them over by hand so he decided it was time for them to be removed. After a little research it was decided that Italian Cypress would be a good fit for the location and environment. In time, the trees should grow to a mature height of 20 to 25 feet and hold a nice columnar shape.

In addition to the cypress tree plantings, Daniel Morena was able to introduce 30 new sword ferns to the planting strip on the North side of City Hall and transplant additional ferns in the existing southern landscapes. The transplanted ferns were acquired from the Smart/Fleet Site in preparation for the upcoming Smart Parking lot expansion.



Previous landscaping with compromised Cherry trees



Daniel working hard to improve the appearance and the maintainability of our facilities.



New landscaping with the Italian Cypress trees.

## Facilities

### “Springing” into Action, continued

In order to prepare for the Smart Parking lot expansion project, Facilities Staff was asked to relocate the art piece “El Viento”. Facility Technician Javid Yamin and Maintenance Specialist Daniel Morena, team up as they remove the art piece and transported it to a secured storage area, where it awaits its new mounting location at the WES bus turnaround area.



Despite all the time needed to assure the proper disinfection and cleaning of our facilities are being performed by the Facilities Team, Facility Technician Ivan Crumrine still managed to find the time to construct a custom built cabinet within Willamette 2 meeting room. Installation of the cabinet will house Audio Visual Equipment and should be complete within the next couple of weeks.



## Roads and Storm Water

### Pothole Repair on Sacajawea Way

After being notified about potholes on Sacajawea Way in Charbonneau, Roads Maintenance Specialist, Roman Kylo and Courtney Burdick went out to inspect the situation. Based on what they saw it was clear the damage to the pavement would require more than a minor repair. Shortly after the inspection, the Roads Crew with the help of the Stormwater and Sewer Crew removed over 70 tons of damaged asphalt and subgrade and replaced it with 70 tons of new asphalt. This repair should allow Sacajawea Way pavement until the scheduled neighborhood sewer repair project is constructed and the street will be completely rebuilt.



## Roads and Storm Water

### 95th Avenue Railing Repair — Again

A vehicle jumped over the curb on 95th Avenue and damaged the railing on the backside of the sidewalk. Fortunately, no one was harmed as there is a 20 foot drop between the sidewalk and the adjacent parking lot. Unfortunately, this is not the first time a vehicle has destroyed the railing which is near Commerce Circle.

Roman Kylo, Roads Maintenance Specialist responded to the call about the broken rail. Once on site he proceeded to make the area safe until a permanent repair could be performed.

Once the new rail and other materials needed for the repair were gathered Roads and Stormwater staff worked together to remove and reinstall the new pedestrian railing.



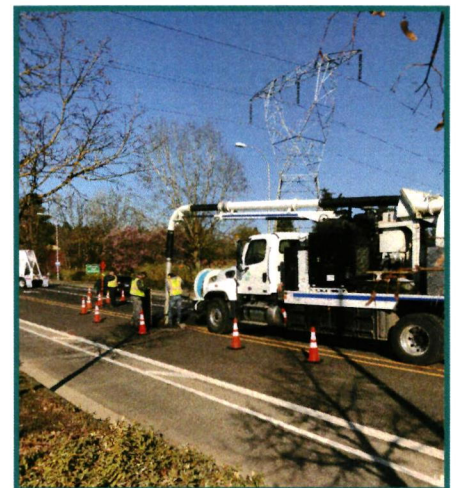
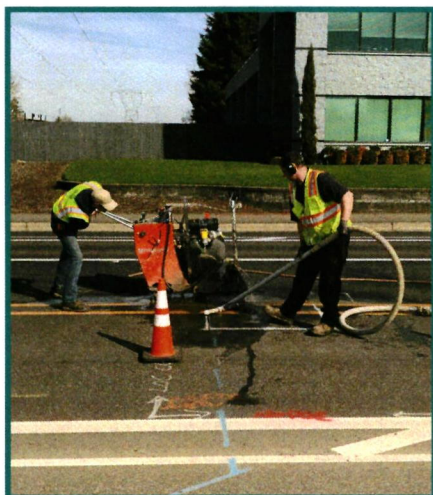
## Utilities

### Butterfly repair

This month the Water Crew tackled the repair of an 18” butterfly valve which isolates the Wilsonville Road “turnout”. A turnout is a connection between the transmission main and the distribution system. This critical valve needed to be repaired since it failed to re-open after being closed to perform work on a different component of the turnout. Fortunately our distribution system is well looped so no water service was interrupted due to the failure of the valve. The unfortunate part of this situation is that the valve is located near one of the busiest intersections on Wilsonville Road under recently installed new asphalt.

The Roads staff assisted the Water Crew with cutting the asphalt and providing traffic control. The Sewer Crew assisted with the excavation to access the valve. Once the valve was exposed, a contractor who specializes in place valve repairs was able to repair the valve gearbox. It was determined that a pin which holds the operating nut to the shaft was the culprit for the failure. The pin was replaced and the valve was backfilled and prepped for paving. The road was then patched a few days later by a contractor.

The Water Crew, Storm Crew, and Roads Crew all did a great job working together to complete this job with minimal disruption to the traffic on Wilsonville Road.



## Utilities

### Just because it says “it is flushable” doesn't mean you should flush it.

The Sewer Crew continues to perform routine line cleaning as well as investigating any customer concerns that may arise. Due to the toilet paper shortage as well as the increase in the use of sanitizing wipes for cleaning surfaces because of the COVID-19 crisis, the crew has been paying particular attention to areas that have a lot of multifamily dwelling units. Staff has been cleaning lines adjacent to these higher use areas to prevent backups caused by products that should not be flushed. The crew has also increased their manhole inspections around the City to identify any parts of the system that may not be flowing as it should.

# THE UNFLUSHABLES:

## Keep wipes and other products from clogging your community's sewer system

With developments surrounding the COVID-19 pandemic, there's lots of change and interruption in our lives. Panic buying has left some people without adequate supplies of toilet paper, and they may have no choice but to use other products in the bathroom. Therefore, it's important that we make sound decisions to prevent clogs and damage to sewer systems.

To keep wastewater systems working properly, please flush only the appropriate waste down the toilet.

### WIPES CLOG PIPES, SO REMEMBER THESE TIPS:

#### FLUSH IT:

Biological waste (urine, feces) and toilet paper are the only materials that should be flushed down the toilet. Toilet paper breaks down in water. Other products do not.

#### TRASH IT:

Anything else—cotton swabs, baby wipes, wet wipes (even if marked “flushable”) and paper towels. These items must be disposed of as domestic waste and NOT flushed down the toilet.



**IT'S A TOILET  
NOT A TRASH CAN!**

**\*ONLY FLUSH TOILET PAPER**

#### PLACE THESE ITEMS IN THE TRASH, NOT THE TOILET:

- Paper towels and napkins
- Disinfecting wipes (even if marked “flushable”)
- Baby wipes
- Diapers
- Feminine hygiene products



These steps will help us keep collection and treatment systems operating properly. If there's no toilet paper and you must use something else, keep a trash bin in the bathroom to dispose of non-toilet-paper products. Clean the bin and surrounding areas regularly. Businesses should provide similar trash bins and consider posting signs reminding patrons not to flush non-toilet-paper products.

Please help us avoid unnecessary sewer clogs and backups.