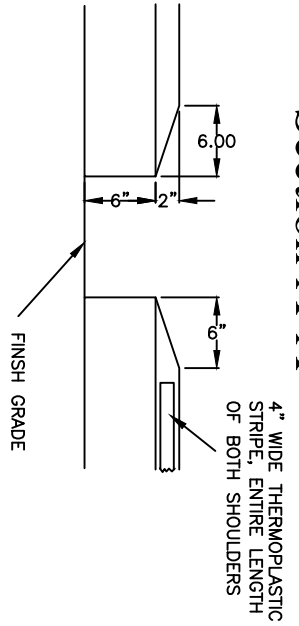
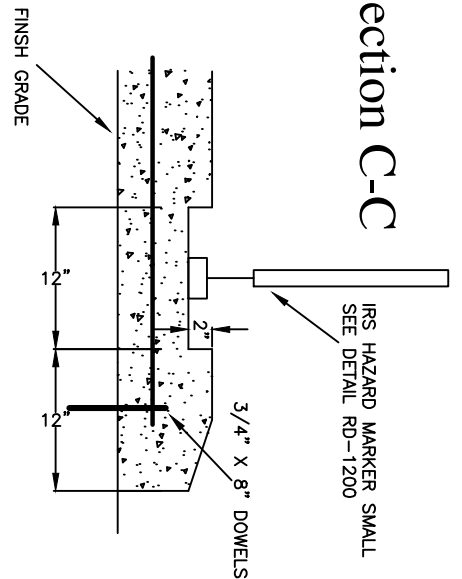


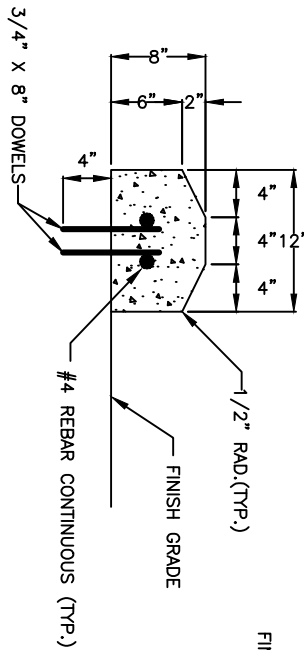
Section A-A



Section C-C



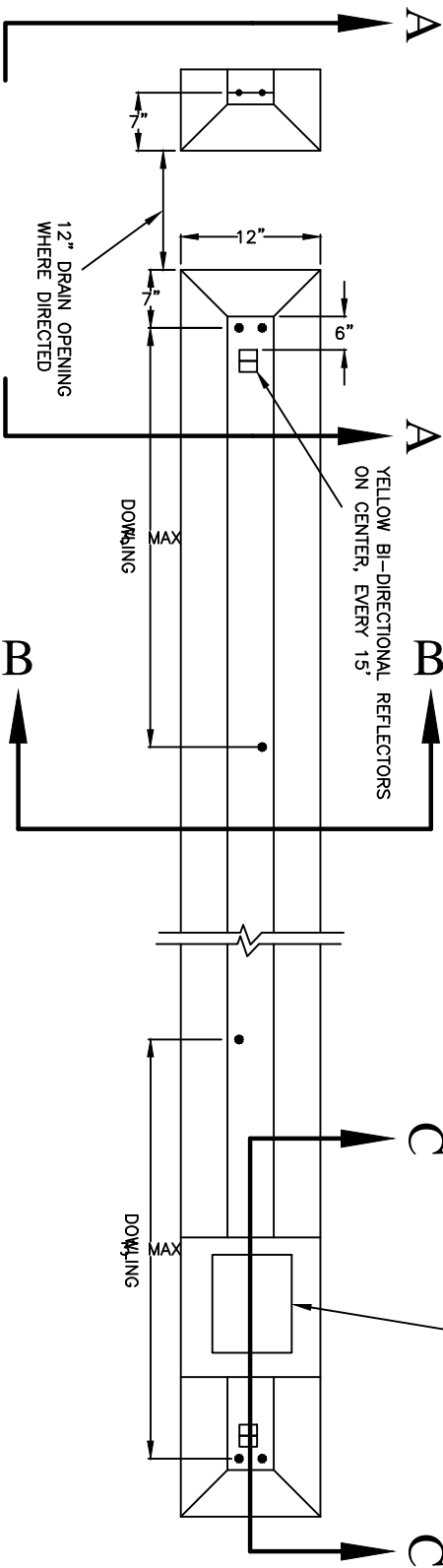
Section B-B



On P.C. or A.C. Pvmt.

Traffic Separator

Type A



- NOTES:
1. TRANSVERSE JOINTS IN CONCRETE TRAFFIC SEPARATORS AND TRANSITIONS TO MATCH JOINTS IN CONCRETE PAVEMENT AND TO BE OF SAME TYPE. OR MAXIMUM JOINTING OF 12' ON ASPHALT PAVEMENT.
 2. DOWELS SHALL BE 3/4" DIAMETER WITH LENGTH AS SHOWN. IN NEW CONCRETE PAVEMENT SET DOWELS BEFORE CONCRETE HARDENS. IN EXISTING CONCRETE OR AC PAVEMENT DRILL HOLES 1 1/4" DIA AND EPOXY IN USING HILTI 150 EPOXY OR APPROVED EQUAL.
 3. CONCRETE SHALL BE COMMERCIAL MIX, MIN. COMPRESSIVE STRENGTH OF 3300 PSI AT 28 DAYS AND INCORPORATE MICRO-REINFORCEMENT "FIBERMESH 300" OR APPROVED EQUAL.

CONCRETE TRAFFIC SEPARATOR

DRAWING NUMBER: RD-1070

DRAWN BY: SR

SCALE: N.T.S.

FILE NAME RD-1070.DWG

APPROVED BY: NK

DATE: 4/2/14

CITY OF
WILSONVILLE

PUBLIC WORKS STANDARDS

