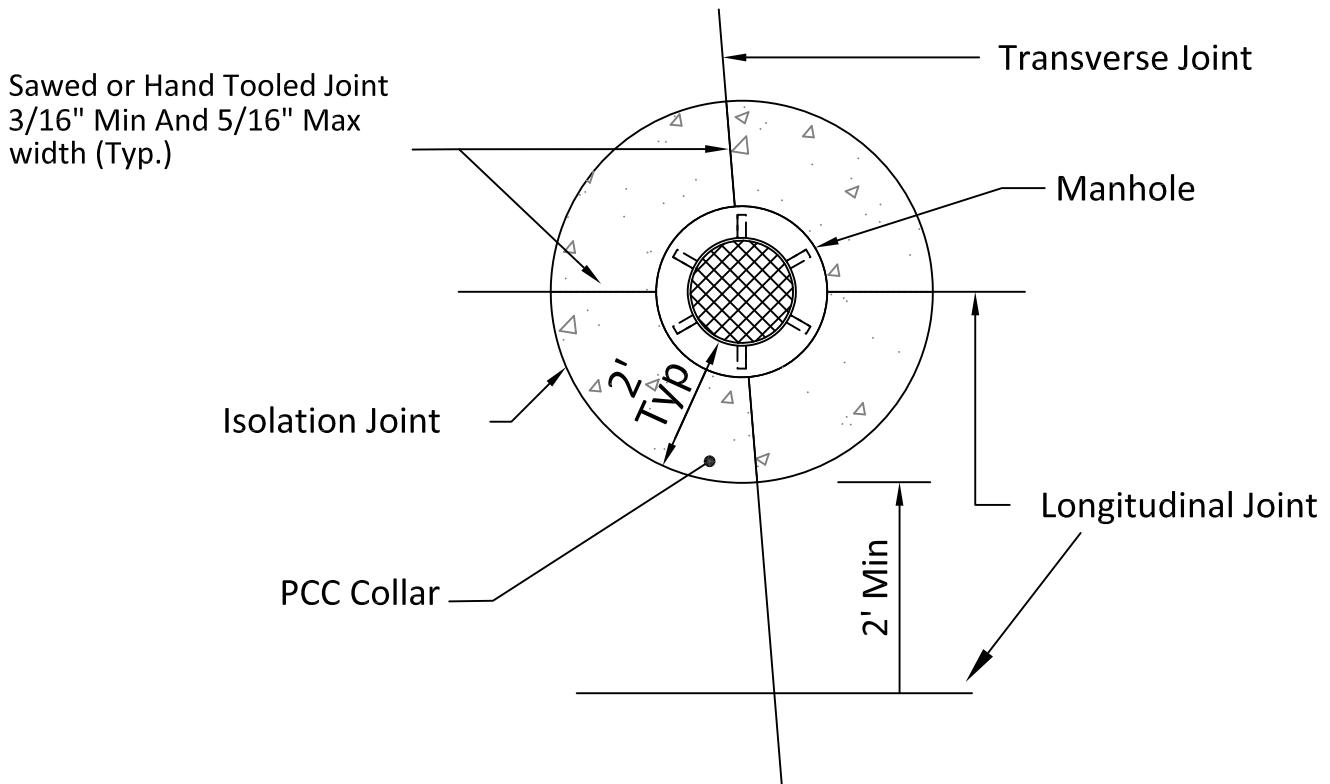


Manhole Collar Detail

No Scale



NOTES:

1. LONGITUDINAL JOINTS SHALL BE SPACED TO EITHER BISECT THE ISOLATION COLLAR OR BE SPACED A MINIMUM OF 2 FEET FROM THE ISOLATION COLLAR.
2. CONCRETE SHALL BE COMMERCIAL MIX, MIN COMPRESSIVE STRENGTH OF 4000 PSI AT 28 DAYS AND INCORPORATE MICRO-REINFORCEMENT "FIBERMESH 300" OR APPROVED EQUAL.
3. BASE COURSE SHALL BE THOROUGHLY WATERED IMMEDIATELY PRIOR TO PLACEMENT OF CONCRETE WHEN THE MEASURED OR FORECASTED ASCENDING AIR TEMPERATURE IS 80 DEGREES OR BETTER

Manhole Collar Detail - PCC Streets

CITY OF
WILSONVILLE



DRAWING NUMBER: RD-1185

DRAWN BY: SR

SCALE: N.T.S.

FILE NAME: RD-1185.DWG

APPROVED BY: NK

DATE: 4/2/14

PUBLIC WORKS STANDARDS