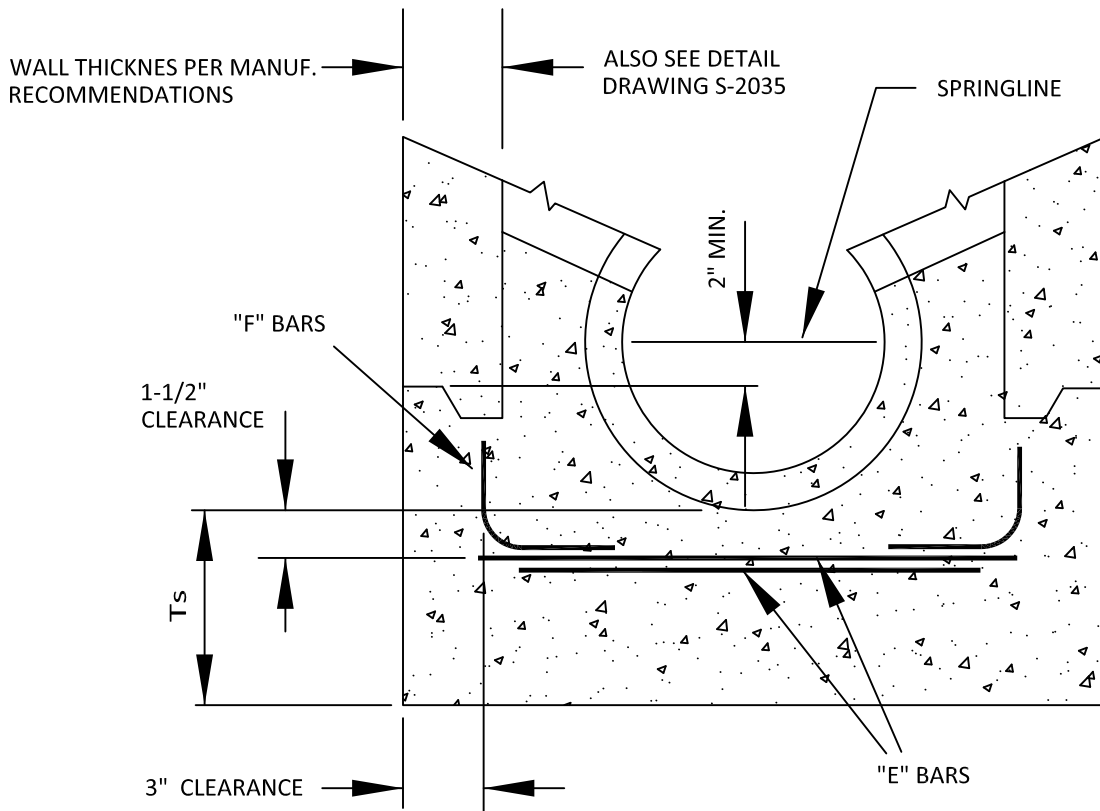


This Detail Drawing may not be altered or changed in any manner except by the City Engineer. It is the responsibility of the user to acquire the most current version.



BASE I.D.		60"		72"	
TYPE	DEPTH *	0'-15'	15'-30'	0'-15'	15'-30'
CAST IN PLACE	Ts	7.0"	9.0"	7.0"	9.0"
	"E" BARS	#4 @ 12"	#4 @ 9"	#4 @ 9"	#4 @ 6"
	"F" BARS	#4 @ 12"	#4 @ 9"	#4 @ 9"	#4 @ 6"
BASE I.D.		84"		96"	
TYPE	DEPTH *	0'-15'	15'-30'	0'-15'	15'-30'
CAST IN PLACE	Ts	8.0"	10.0"	9.0"	11.0"
	"E" BARS	#4 @ 8"	#5 @ 9"	#4 @ 7"	#5 @ 8"
	"F" BARS	#4 @ 8"	#5 @ 9"	#4 @ 7"	#5 @ 8"

\* INVERT TO STREET GRADE

NOTE:  
 CONCRETE SHALL HAVE A COMPRESSIVE STRENGTH OF 4,000 PSI. AT 28 DAYS.  
 STEEL fg = GRADE 60.

Large Cast-in-place Concrete Manhole Base

CITY OF  
 WILSONVILLE



DRAWING NUMBER: S-2040

DRAWN BY: SR

SCALE: N.T.S.

FILE NAME: S-2040.DWG

APPROVED BY: NK

DATE: 6/4/14

PUBLIC WORKS STANDARDS