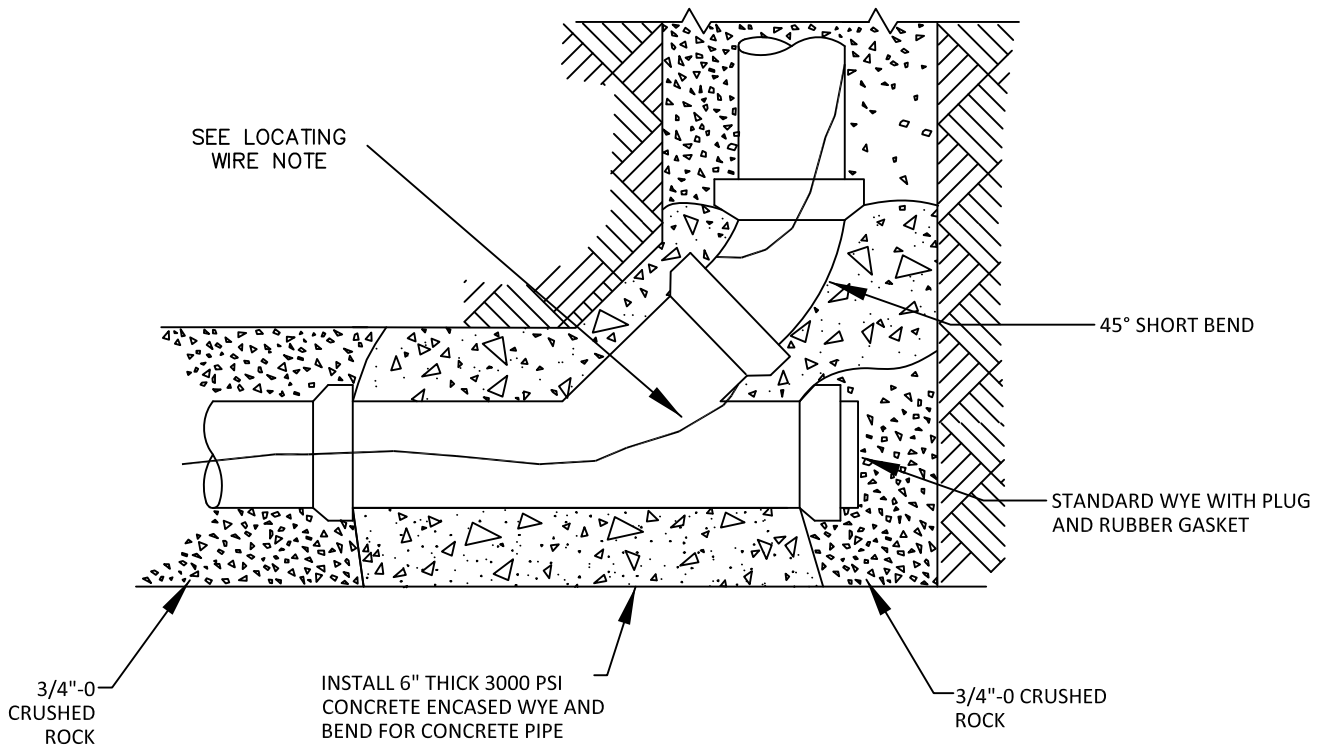
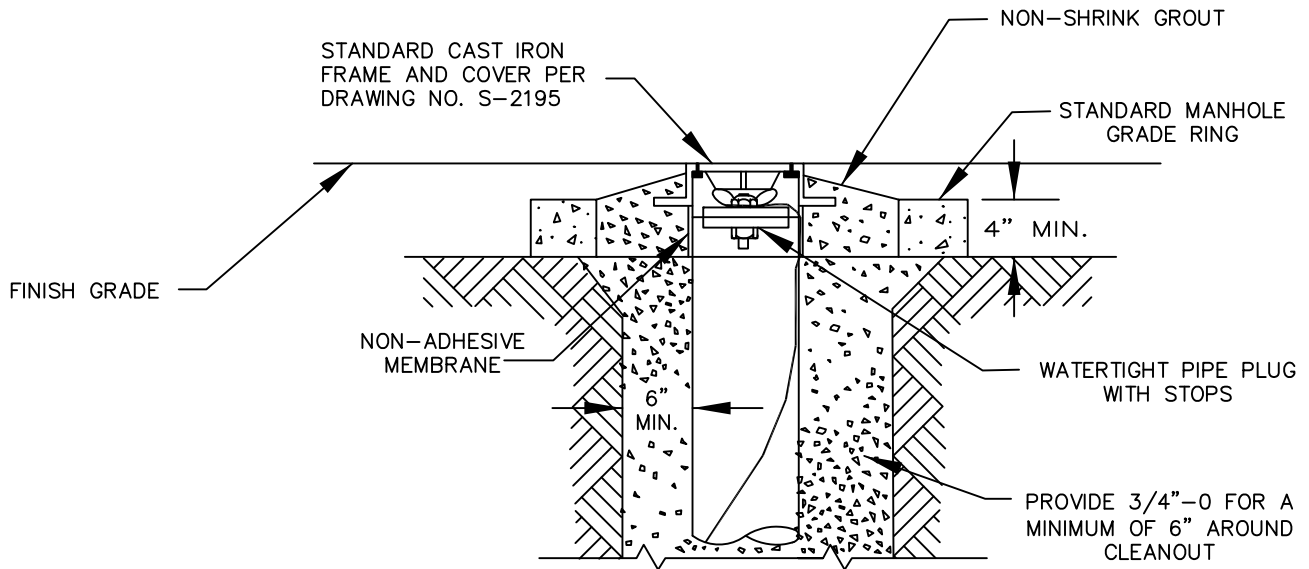


This Detail Drawing may not be altered or changed in any manner except by the City Engineer. It is the responsibility of the user to acquire the most current version.



NOTE:

1. CLEANOUT INSTALLATIONS ARE LIMITED TO EASEMENT AREAS OR MAY BE ALLOWED ON A TEMPORARY BASIS IN RIGHT-OF-WAYS.
2. CONCRETE ENCASE ENTIRE WYE SECTION AND 45° BEND IF CONCRETE PIPE.
3. CLEANOUTS SHALL BE PLACED OUTSIDE OF SIDEWALKS AND DRIVEWAYS.
4. CLEANOUTS IN PLANTER STRIPS SHALL BE LOCATED NEXT TO SIDEWALK.
5. LOCATING WIRE SHALL BE 12 GAUGE, HMW-PE CONTINUOUS, AND TIED TO MAIN AND TO CLEANOUT PLUG. WIRE SHALL BE PLACED ALONG THE SPRING-LINE OF LATERAL WITH EXTRA 2' LENGTH PROVIDED AT THE CLEANOUT. USE GREEN WIRE FOR SANITARY AND WHITE FOR STORM.

Standard Cleanout

DRAWING NUMBER: S-2180

DRAWN BY: SR

SCALE: N.T.S.

FILE NAME: S-2180.DWG

APPROVED BY: NK

DATE: 6/4/14

**CITY OF
WILSONVILLE**



PUBLIC WORKS STANDARDS