



SKB PARKWORKS

Design Narrative

WILSONVILLE DRB HEARING - 12.11.2023





INTERSTATE 5 - NORTHBOUND

SW PARKWAY AVENUE

XEROX DRIVE

SITE ACCESS POINT

FIRE / ELEC

SECONDARY ENTRY

LOADING DOCK

R&D
MANUFACTURING

OFFICE

MAIN ENTRY

SITE ACCESS POINT

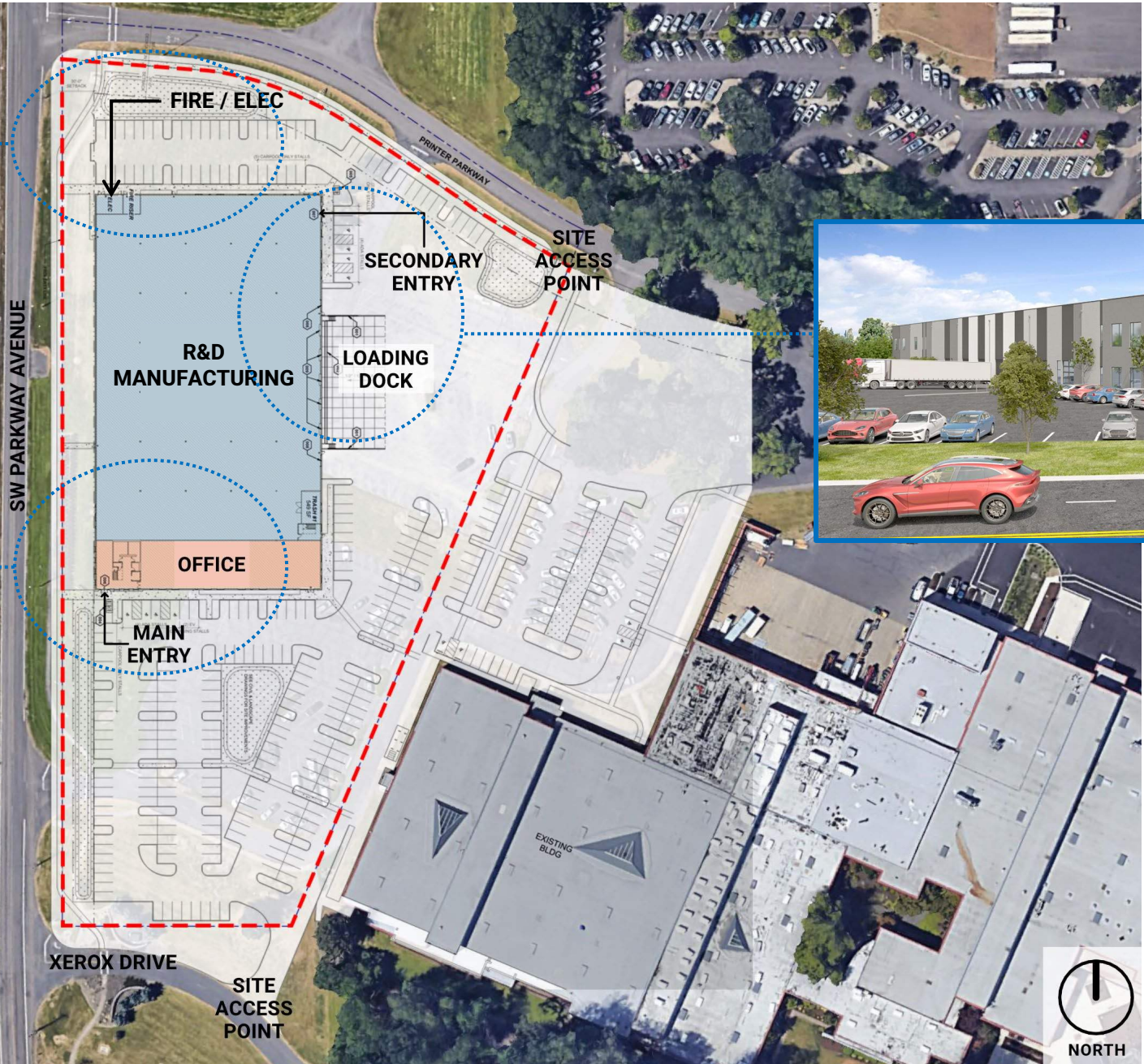
EXISTING BLDG

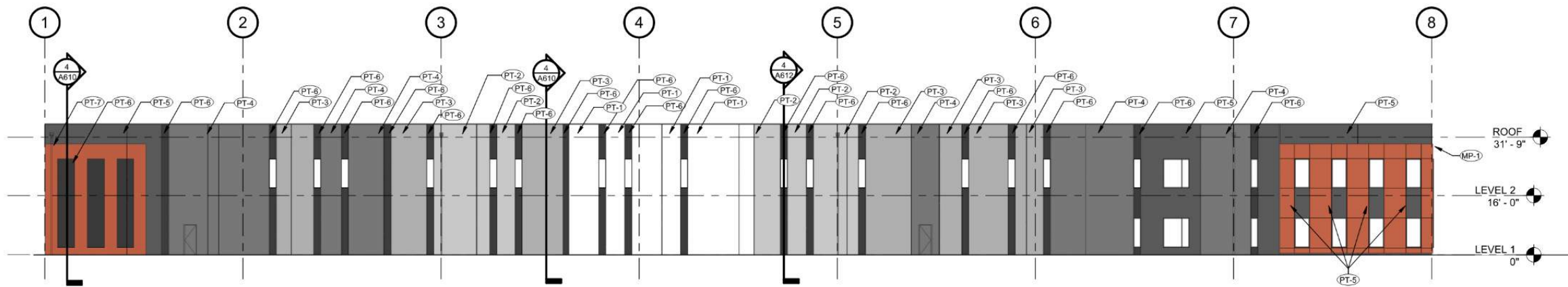
PRINTER PARKWAY



NORTH

LRS





4. OVERALL WEST ELEVATION









26600

ParkWorks



TENANT
TENANT
TENANT
TENANT

