

# Lamborghini Dealership

DRB Panel B Public Hearing

August 26, 2024

Presented by: Georgia McAlister, Associate Planner

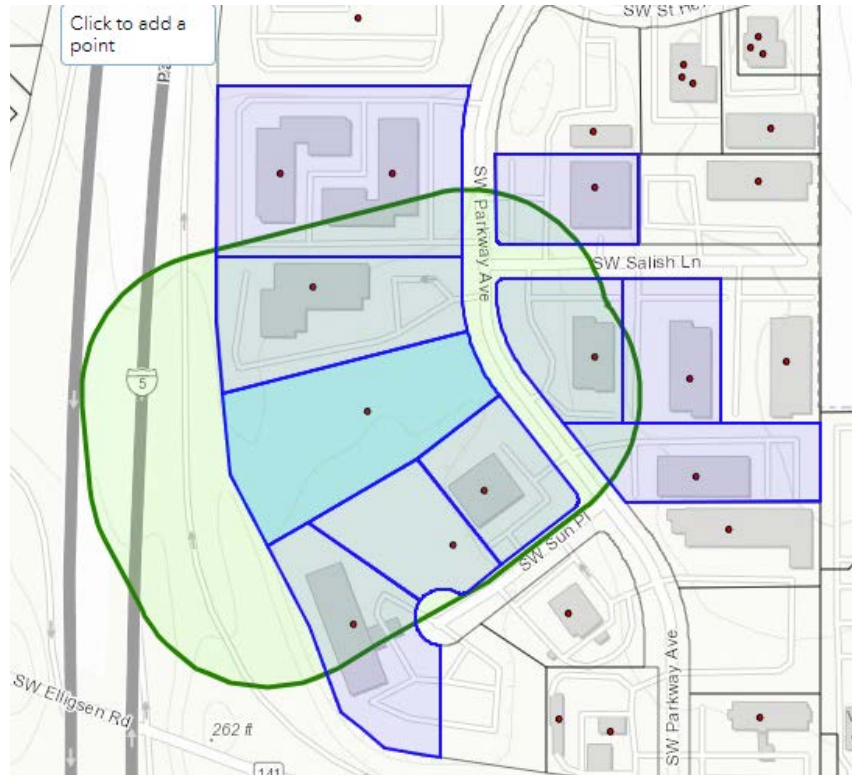


**WILSONVILLE**  
OREGON

# Location



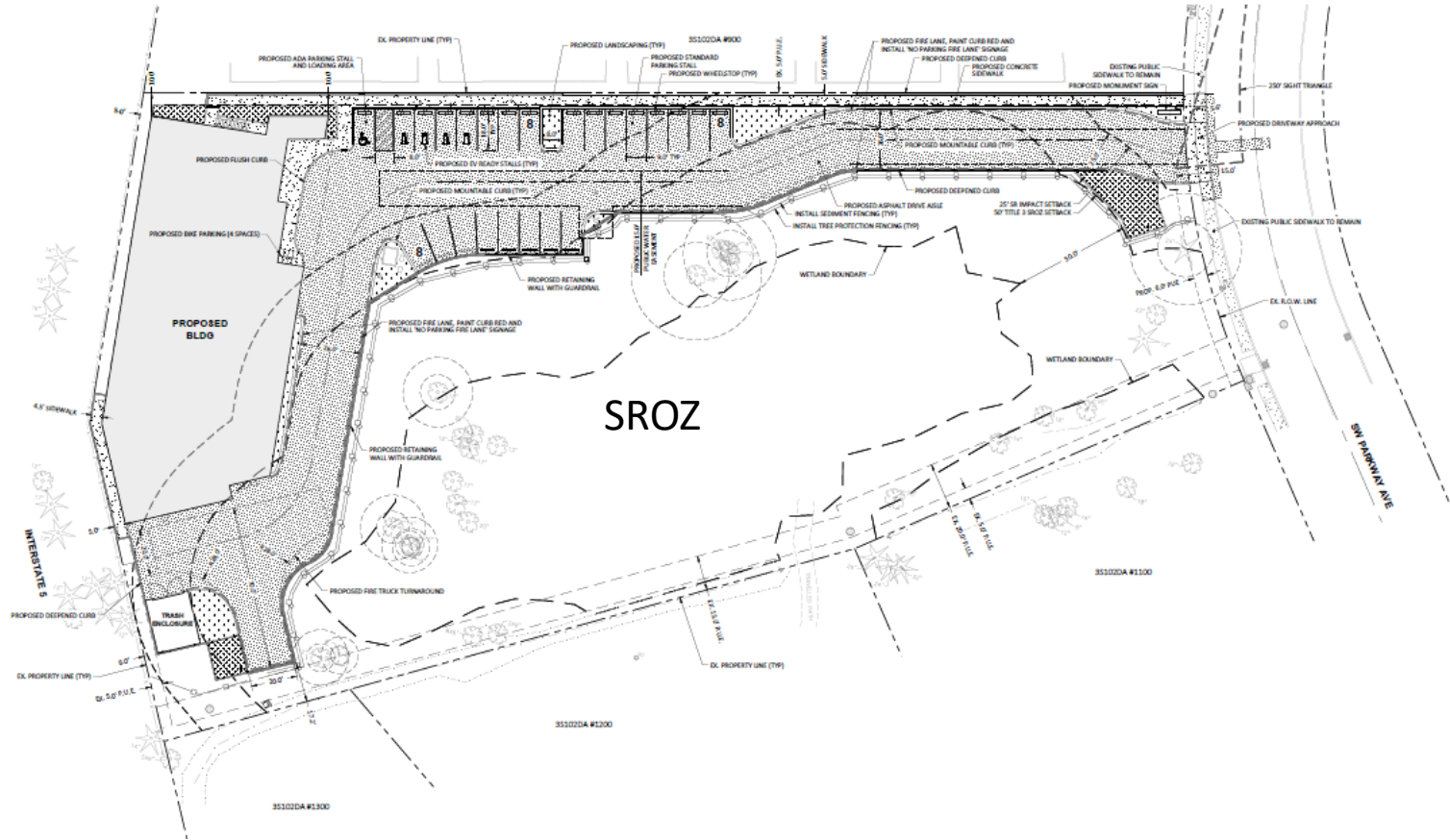
# Noticing



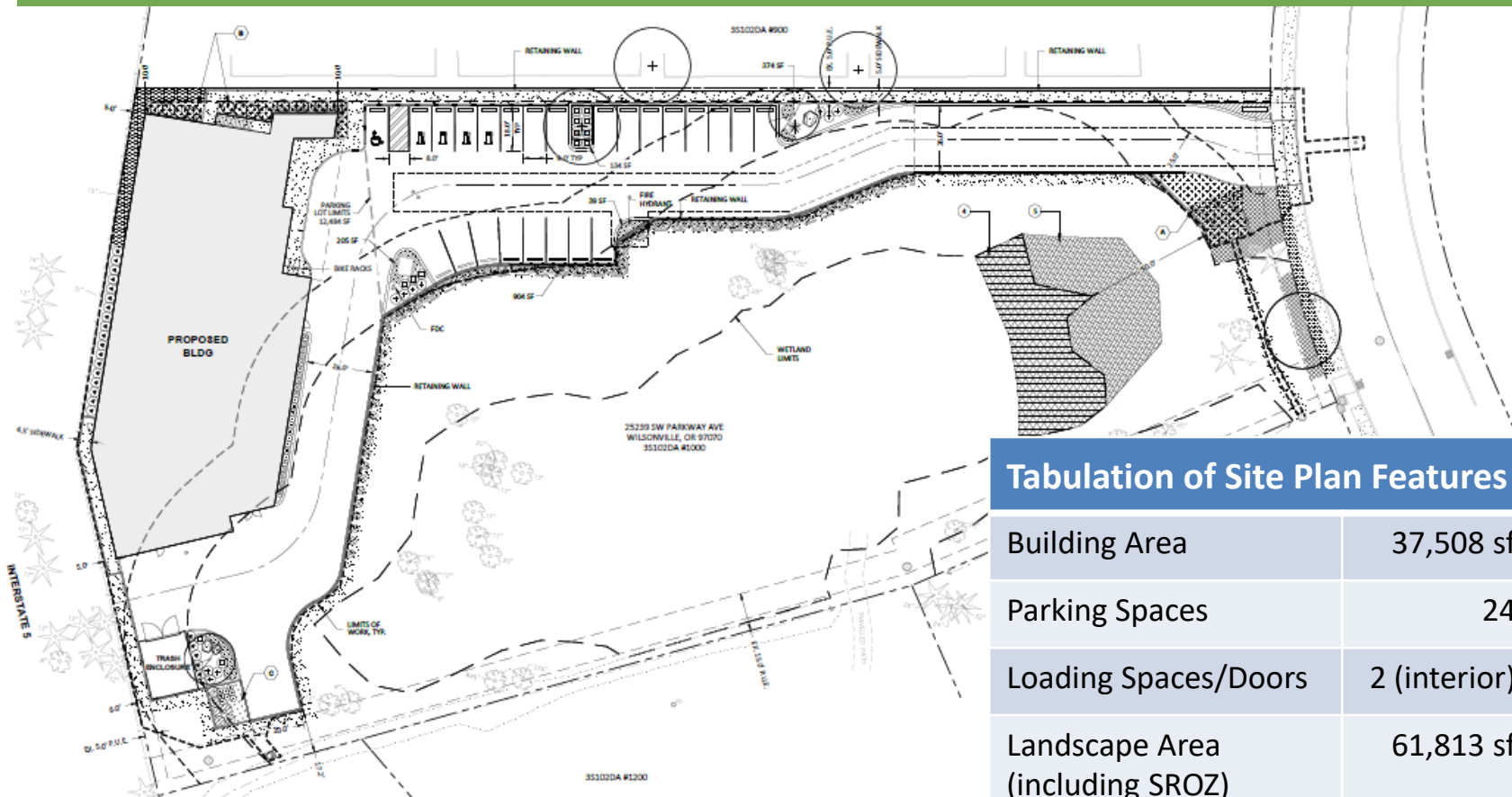
# List of Applications

- **Verifying Compliance with Clear & Objective Standards:**
  - Stage 1 Preliminary Plan (STG124-0002)
  - Stage 2 Final Plan (STG224-0002)
  - Site Design Review (SDR24-0003)
  - Type C Tree Removal Plan (TPLN24-0003)
  - Class 3 Sign Permit (SIGN24-0008)
  - SRIR Review (SRIR24-0002)
- **Discretionary Review**
  - Waiver Request (WAIV24-0001)
  - Variance (VAR24-0002)

# Stage 1 Preliminary Plan



# Stage 2 Final Plan



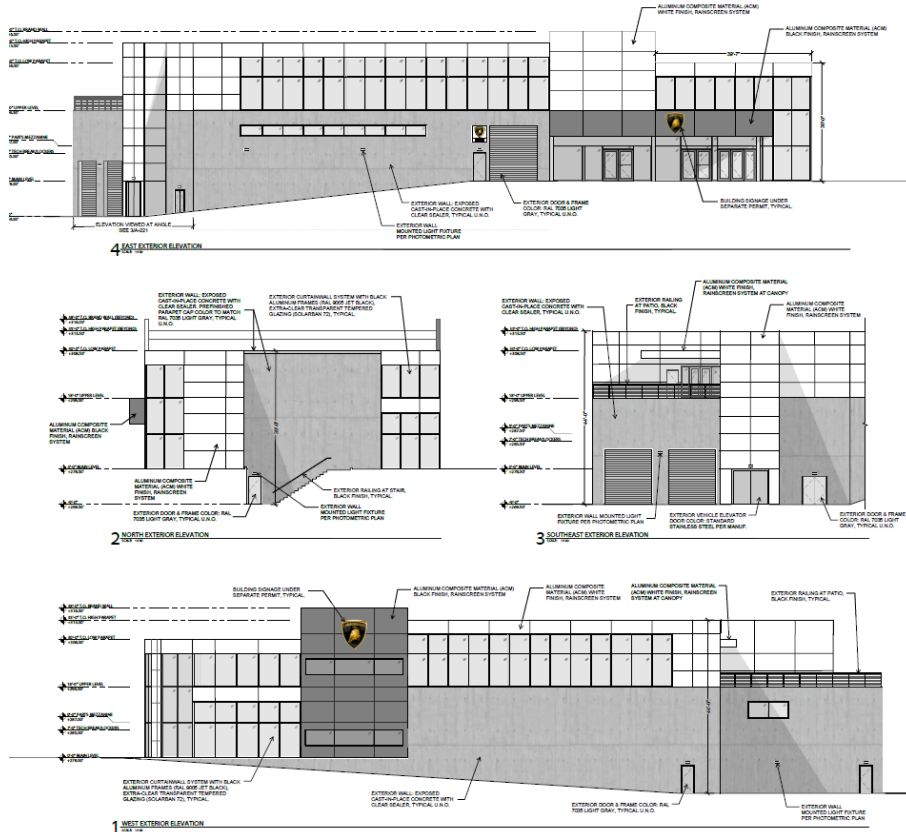
## Tabulation of Site Plan Features

Building Area	37,508 sf	
Parking Spaces	24	
Loading Spaces/Doors	2 (interior)	
Landscape Area (including SROZ)	61,813 sf	61.6%

# Stage 2 Final Plan - Traffic

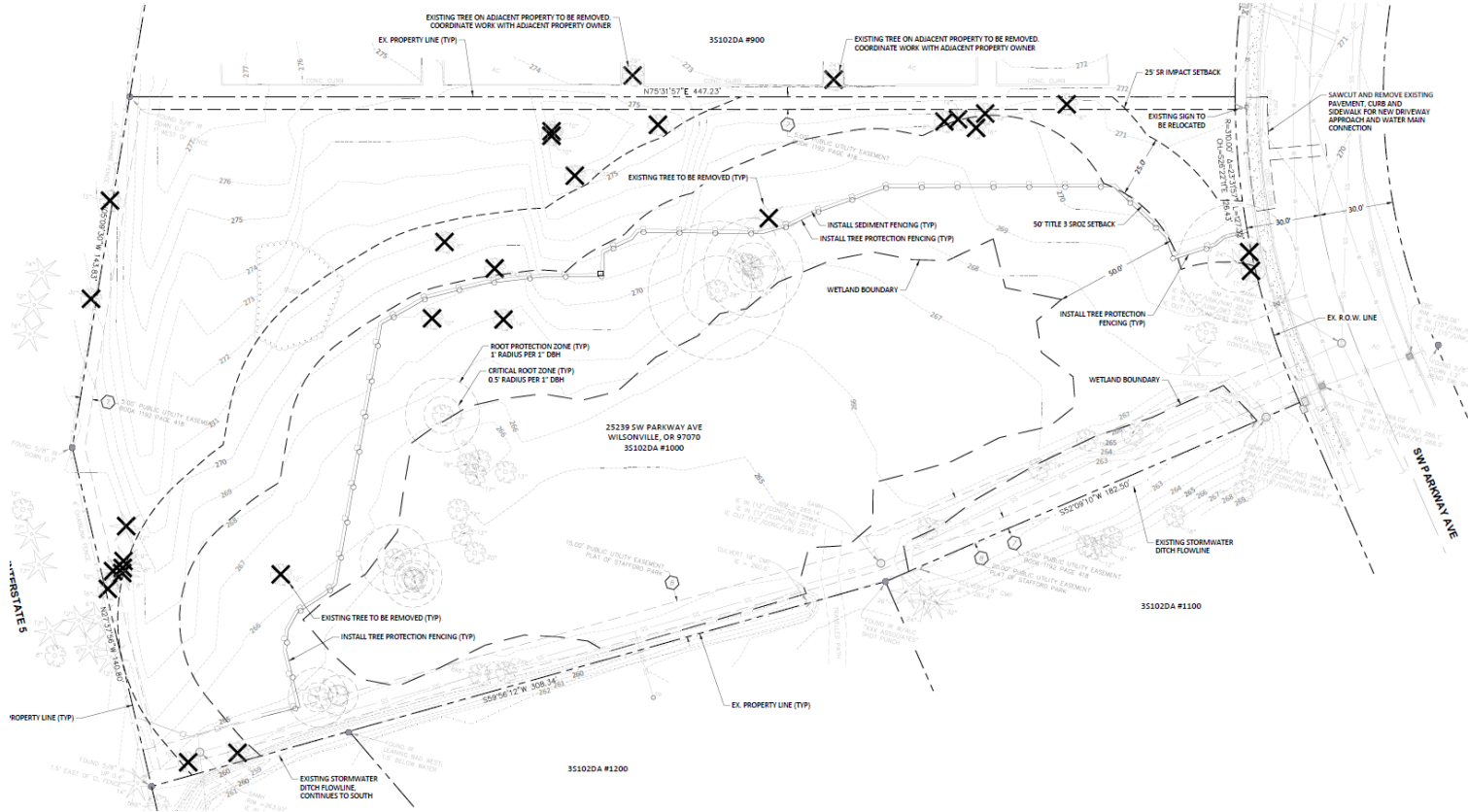
- **Evaluated intersections:**
  - I-5 Southbound Ramps/SW Elligsen Road (LOS B)
  - I-5 Northbound Ramps/SW Elligsen Road(LOS A)
  - SW Parkway Ave/SW Elligsen Road(LOS C)
- **Level of Service D or better**
  - Operation at all evaluated intersections exceeds the minimum standard LOS D

# Site Design Review

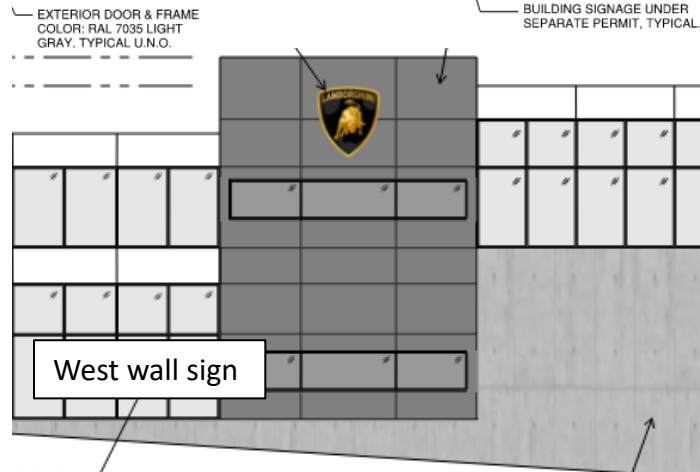
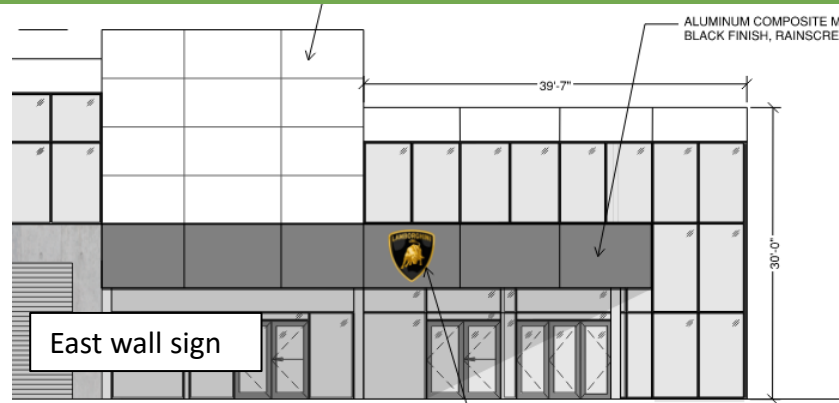




# Type C Tree Removal Plan

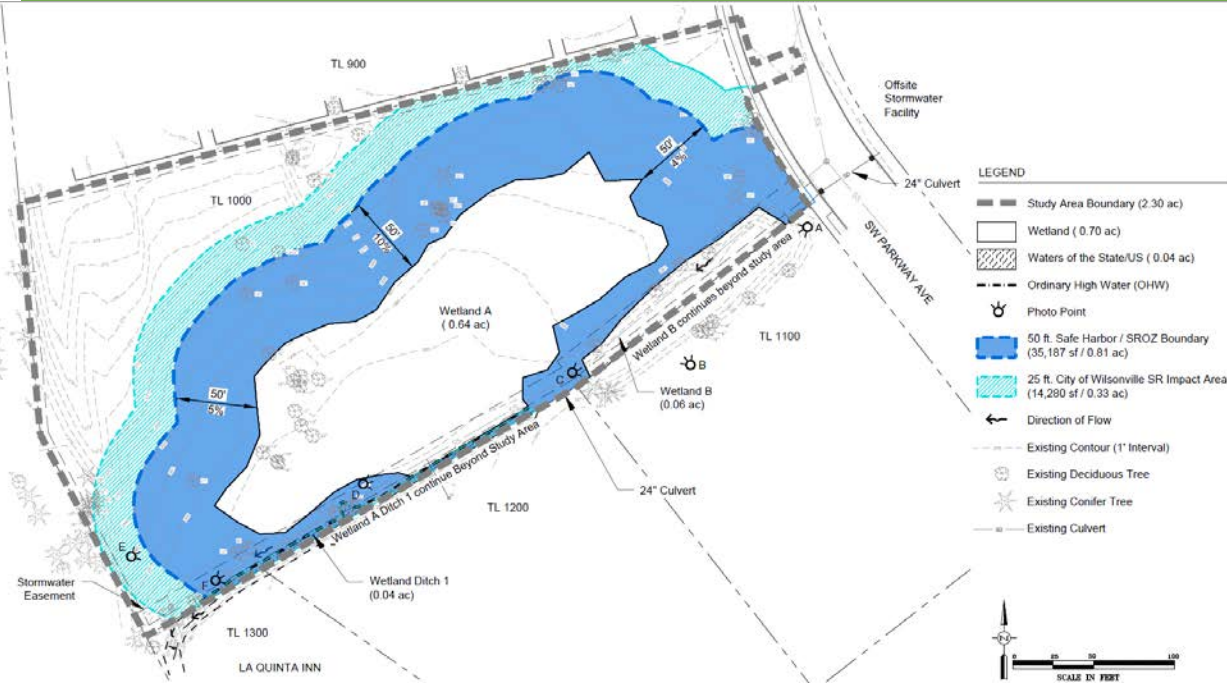


# Class 3 Sign Permit



Sign detail

# Standard SROZ Map Verification and SRIR Review



## MITIGATION PLANTING TABLE

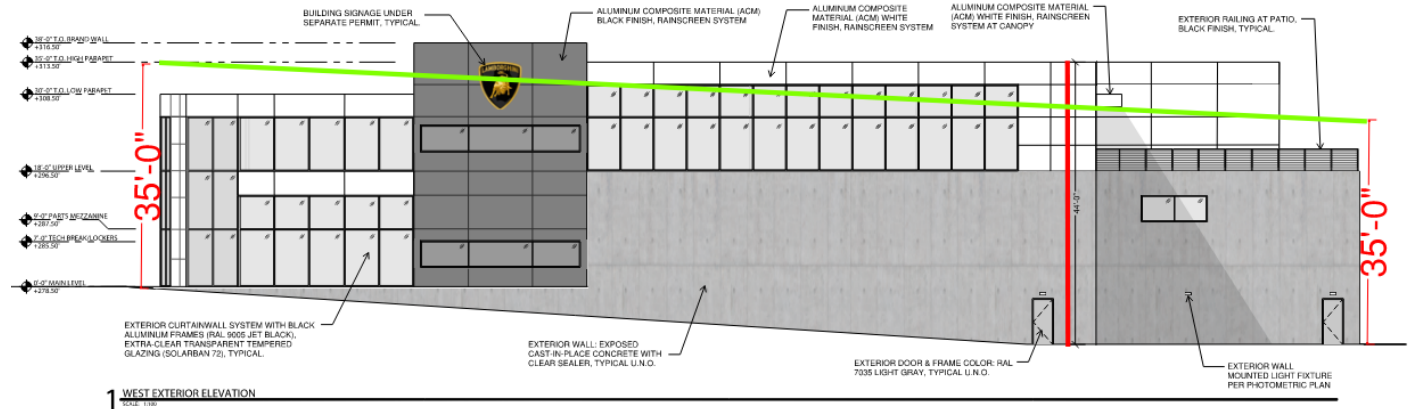
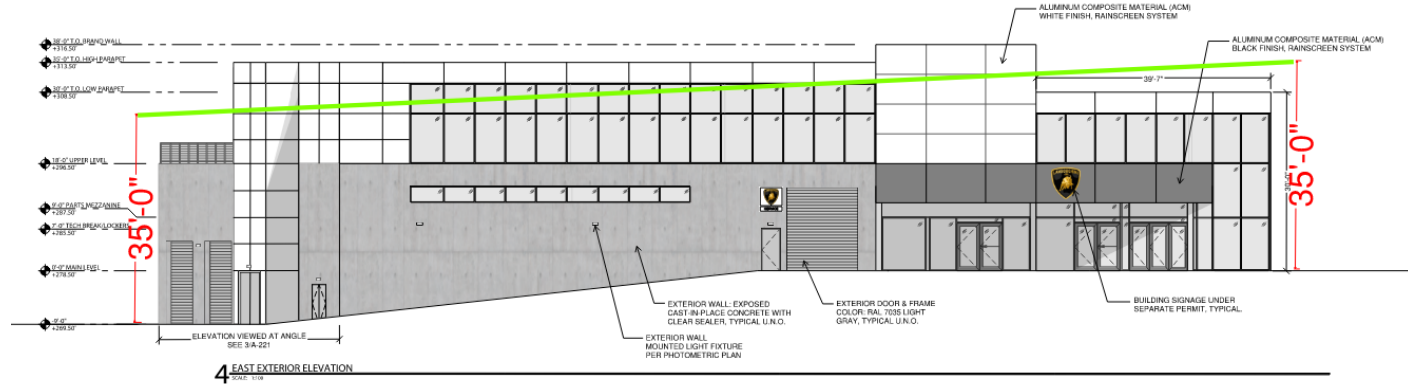
BOTANICAL NAME	COMMON NAME	WETLAND INDICATOR STATUS	Minimum Rooting Size	UPLAND PLANTING AREA	WETLAND PLANTING AREA
<b>TREES</b>					
<i>Acer macrophyllum</i>	Bigleaf Maple	FACU	2 Gallon	5	
<i>Quercus garryana</i>	Oregon White Oak	UPL	2 Gallon	10	
<i>Populus balsamifera</i>	Balsam Poplar	FAC	2 Gallon		5
<i>Pinus ponderosa</i> var. <i>willamettensis</i>	Willamette Valley Ponderosa Pine	FACU	2 Gallon	5	
<i>Fraxinus latifolia</i>	Oregon Ash	FACW	2 Gallon		15
				Total trees	20
<b>SHRUBS</b>					
<i>Amelanchier alnifolia</i>	Western Serviceberry	FACU	1 Gallon	5	
<i>Symphoricarpos alba</i>	Snowberry	FACU	1 Gallon	5	
<i>Mahonia aquifolium</i>	Tall Oregon Grape	UPL	1 Gallon	10	
<i>Polystichum munitum</i>	Pacific Sword Fern	FACU	1 Gallon		
<i>Cornus sericea</i> ssp. <i>sericea</i>	Red-osier Dogwood	FACW	1 Gallon		5
<i>Salix hookeriana</i>	Hooker's Willow	FACW	1 Gallon		10
<i>Spiraea douglasii</i>	Douglas spirea	FACW	1 Gallon		5
				Total shrubs	20
<b>GRASSES AND FORBS*</b>					
<i>Elymus glaucus</i>	Blue Wild-rye	FACW	5 lbs		X
<i>Festuca idahoensis</i>	Idaho Fescue	FACU	5 lbs	X	

\*Grass seed to be applied in all temporary disturbed areas following construction at 7-10 PLS / Acre

# Discretionary Review – Variance



# Discretionary Review – Waiver to Height



# Discussion



**WILSONVILLE**  
OREGON