

RESOLUTION NO. 3100

A RESOLUTION OF THE CITY OF WILSONVILLE AUTHORIZING THE SOLE SOURCE SELECTION OF THE BACKYARD HABITAT CERTIFICATION PROGRAM FOR FY 23-24 THROUGH FY 25-26.

WHEREAS, Columbia Land Trust and Portland Audubon co-manage the Backyard Habitat Certification Program (BHCP), which provides technical assistance, incentives, resources, and recognition to private property owners to restore native wildlife habitat, control priority noxious weeds, reduce pesticides, and manage stormwater at home; and

WHEREAS, the program is designed to increase effective management of privately-held lands by partnering with communities and by leveraging the time, labor and skills of volunteers and program participants; and

WHEREAS, in 2018, Columbia Land Trust and Portland Audubon launched the expansion of the BHCP into the City of Wilsonville; and

WHEREAS, the City may sole-source procurements without competition when it is determined that one of four (4) criteria outlined in ORS 279B.075 are met based on written findings; and

WHEREAS, the City finds that ORS 279B.075(2)(a) "That the efficient utilization of existing goods requires acquiring compatible good or services" is met. The BHCP provides the City a unique opportunity to engage the community in the restoration of native wildlife habitat, and an array of assistance is available through the program that could not be replicated with another organization; and

WHEREAS, the City finds that ORS 279B.075(2)(d) "Other findings that support the conclusion that the goods or services are available from only one source" is met. The BHCP is the only organization that provides a certification program for small property owners and a unique combination of technical assistance and incentives that enable residents to restore native wildlife habitat; and

WHEREAS, the total projected contract cost for the program from FY 23-24 through FY 25-26 is \$30,559.

NOW, THEREFORE, THE CITY OF WILSONVILLE RESOLVES AS FOLLOWS:

Section 1. The City Council incorporates and adopts the above recitals and the staff report accompanying this Resolution as if fully set forth herein.

Section 2. The City Council approves the sole source selection of the Backyard Habitat Certification Program for FY 23-24 through FY 25-26.

Section 3. Effective Date. This Resolution is effective upon adoption.

ADOPTED by the Wilsonville City Council at a regular meeting thereof this 4th day of December, 2023, and filed with the Wilsonville City Recorder this date.

DocuSigned by:
Julie Fitzgerald
8A974AE3ADE042E

JULIE FITZGERALD, MAYOR

ATTEST:

DocuSigned by:
Kimberly Veliz
E784DE10276B408...

Kimberly Veliz, City Recorder

SUMMARY OF VOTES:

Mayor Fitzgerald	Yes
Council President Akervall	Yes
Councilor Linville	Excused
Councilor Berry	Yes
Councilor Dunwell	Yes

EXHIBIT:

A. Backyard Habitat Certification Program Scope of Work for FY 23-24 through FY 25-26

EXHIBIT A

Backyard Habitat Certification Program Proposal to City of Wilsonville - 2023-26



June 23, 2023

Background

The Backyard Habitat Certification Program (BHCP) provides technical assistance, incentives, resources, and recognition to private property owners to restore native wildlife habitat, control noxious weeds, reduce pesticides, and manage stormwater at home. The program is designed to increase effective management of privately held lands by partnering with community members and by leveraging the time, labor, and skills of 80+ volunteers. The program now consists of 10,400+ program participants who are stewarding more than 2,500 acres. The program prioritized engaging all residents, regardless of socioeconomic standing, in the program. Together we accomplish crucial ecological outcomes while fostering lasting behavior change and an ethic of stewardship. We officially launched into Wilsonville in April 2018.

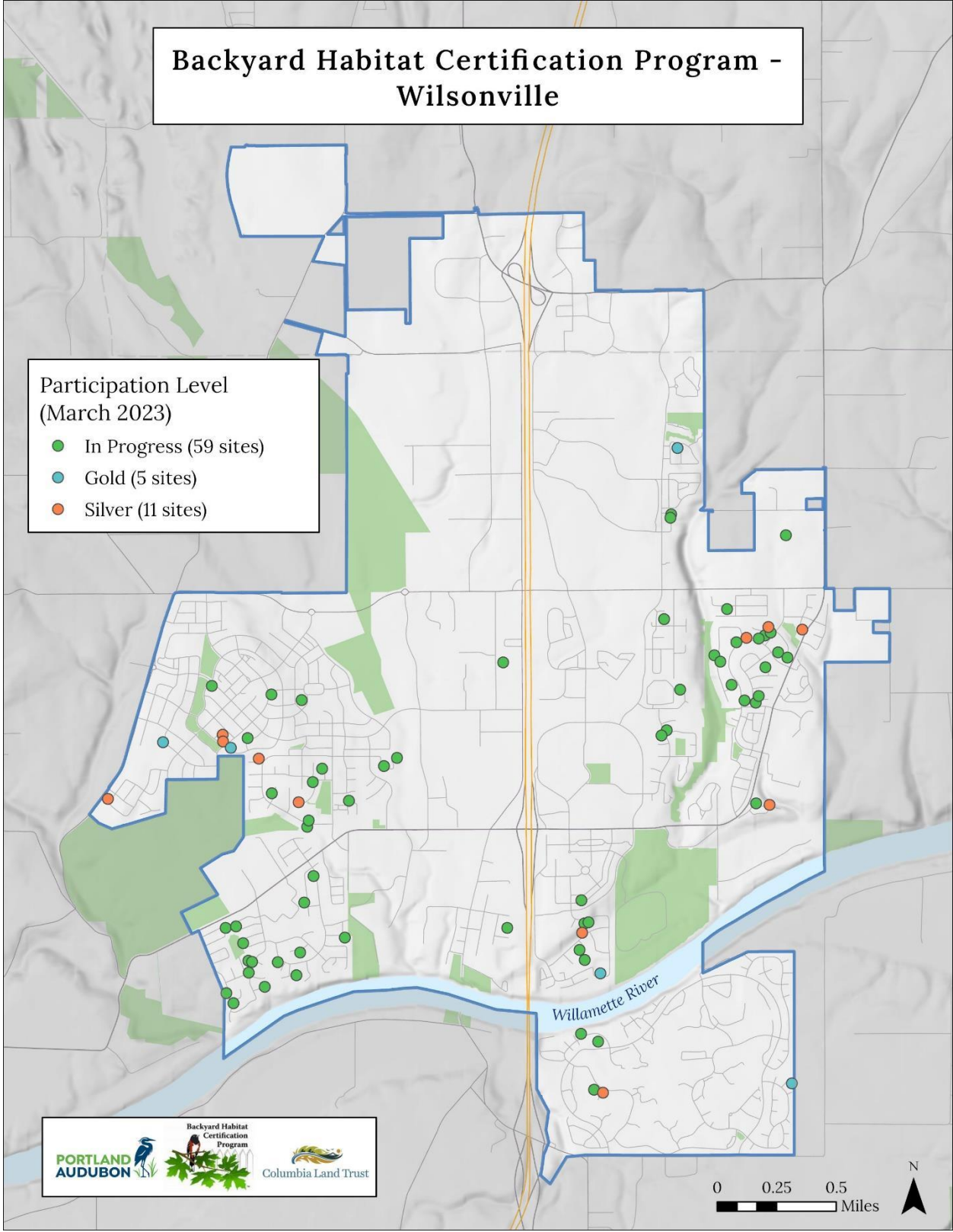
As development and the population in the metropolitan area grows at an unprecedented rate — from 2.1 million people today to 3.2 million people in 2030 — it is a priority to enlist the help of county residents in efforts to combat environmental burdens. The BHCP directly responds to this call to action by engaging urban and sub-urban residents as partners in conservation. The objectives of the program are to increase the public's awareness of the benefits of ecological stewardship in the metropolitan area and to incentivize continual, measurable, on-the-ground habitat enhancements in five key areas:

- 1) removal of priority noxious weeds
- 2) planting of native vegetation for ecological and sustainability purposes
- 3) reduction or elimination of pesticide use
- 4) wildlife stewardship, including planting for pollinators
- 5) on-site stormwater management

Backyard Habitat Certification Program - Wilsonville

**Participation Level
(March 2023)**

- In Progress (59 sites)
- Gold (5 sites)
- Silver (11 sites)



Complete package of services provided to each Backyard Habitat enrollee:

- 1) In-person site assessment by Habitat Technician that includes:
 - Identification of priority noxious weeds
 - Identification of native plants
 - Resource Packet connecting participants to local programs, resources, and information
 - Native Plant Discounts Flyer – coupon booklet (approx. \$150 value) with discounts at 15 local retail nurseries (Al's Garden Center, Birds & Bees Nursery, Bosky Dell Natives Nursery, Cornell Farms Nursery, Dennis' 7 Dees, Echo Valley Natives Nursery, Farmington Gardens, Garden Fever, Good Year Farms, Livingscape, Native Plantscapes NW, Portland Nursery, Sauvie Island Natives, Sparrowhawk Native Plants, SymbiOp).
Clackamas County nurseries include: Bosky Dell, Al's Garden & Home, Dennis 7 Dees, and Echo Valley Natives.
 - In Progress yard sign provided
 - Baseline data collected for each site, including noxious weeds and native plants present, stormwater and wildlife stewardship actions taken, pesticide use, etc
- 2) Personalized site report explaining steps needed to reach certification:
 - Personalized list of recommended native plants
 - BMPs for each priority noxious weed present, along with eradication advice
 - Information on stormwater management options
 - Information on the harmful effects of herbicides/pesticides and how to garden without them
 - Information on wildlife stewardship options
- 3) Access to our on-line Resource Library with over 150 handouts and informative articles
- 4) Arborist and Landscape Professionals Directory – 47 local businesses trained on BHCP principles. Participants use the Directory to hire professionals trained in creating habitat and sustainable gardening to support their BHCP projects.
Note: Of the 47 businesses listed in 2022, 28 work in Clackamas County.
- 5) Ongoing follow-up: 6 months after the initial site visit the participant receives a follow-up phone call from the technician. Every 6 months after, they receive a follow-up email from program staff.
- 6) Opportunity to receive a remote or in-person follow-up consultation, if needed, while working towards certification.
- 7) Invitation to the annual BHCP Open Garden Project (60 garden hosts, 100 opportunities to visit one of the gardens, 1200+ participants signed up to attend)
- 8) Quarterly e-newsletter – 14,600 recipients receive information about local workshops, plant sales, presentations, and other resources for landscaping sustainably and gardening for wildlife.
- 9) Follow-up certification visits with trained volunteers:
 - Second on-site evaluation to confirm recommended actions taken; follow-up data collected
 - Metal "Certification" sign awarded if criteria for certification is met; photo is taken and posted on Facebook to provide recognition and inspire others
 - Participants may upgrade to higher levels of certification
 - Certification is valid for 3 years, then needs to be renewed
- 10) Certification benefits include free memberships to Columbia Land Trust and Portland Audubon, additional discounts, coupons, and incentives

Certified Participants in Wilsonville (17 Total Certified)



Tracy - Certified in 2021



Ann – Certified in 2021



Mala – Certified in 2021



Robin – Certified in 2022



Grace – Certified in 2021



Kellie – Certified in 2021

Partnership Elements and Benefits

- 1) The Backyard Habitat Certification Program would:
- Provide ongoing support to 75 enrolled participants in Wilsonville to plant native vegetation, remove priority noxious weeds, reduce the use of pesticides, manage stormwater on-site, and support wildlife such as birds and pollinators
 - Leverage Wilsonville’s existing natural resource goals and efforts
 - Provide discounts and incentives to Wilsonville residents, including nursery coupons, free memberships to Columbia Land Trust and Portland Audubon, etc.
 - Make priority weed, stormwater management, and pesticide use data available to the City
 - Publicize Wilsonville’s support on our website, newsletters, social media, public presentations, annual reports, etc.
 - Support the green economy of Wilsonville by recruiting and publicizing nurseries and landscape professionals
 - Provide text, images, logos to the City of Wilsonville for social media, newsletters, and other joint outreach
 - Recruit Wilsonville residents as volunteers; invite to our annual spring training; provide them with extensive training to do certification visits or for other volunteer opportunities
 - Host our Open Gardens Project annually from spring until fall
 - Invoice the City at least once a year, accompanied by an annual report on program activities, nurseries and landscape professionals trained on BHCP principles and/or publicized by BHCP, and data on Wilsonville site visits, certifications and volunteers

Backyard Habitat Impact in Wilsonville		
	Site Visits	Certification Visits
FY17-18	6	1
FY18-19	8	1
FY19-20	18	1
FY20-21	17	6
FY21-22	18	5
FY22-23 (to date)	15	3
TOTAL	82	17

- 2) City of Wilsonville would:
- Publicize the program through existing mechanisms (website, newsletters, neighborhood groups, flier distribution at county-sponsored events, etc)
 - Help connect program staff to local community-based organizations
 - Provide fiscal support for the program

Economic Value of Backyard Habitats per year:

This section highlights the monetary value that our program provides to Clackamas County and the region per year. BHCP participants are stewardship volunteers dedicating their time to restoring their properties using regional restoration guidelines. Restoration actions include: removing priority noxious weeds, restoring their properties by planting native plants, supporting life cycles of wildlife, processing stormwater onsite, and using non-toxic gardening methods. This value is not reflected in our budget but is a significant contribution to Clackamas County natural resources.

- Program volunteers- educate, engage, and certify. 80 trained program volunteers dedicate 1000 hrs annually: 1,560hrs @\$29.95/hr = \$46,722 value
- Participants as “stewardship volunteers” on private lands:
 - Remove priority noxious weeds: approx. 20 hrs/year x 9,400 participants = 188,000 hrs/year @ \$29.95/hr = approx. \$5,630,600 value
 - Plant native plants: approx. 20 hrs/year x 9,400 participants = 188,000 hrs/year @ \$29.95/hr = approx. \$5,630,600 value
- Native trees and shrubs planted: 45,000 trees & shrubs @ approx. \$8 each = \$360,000 value
- Personalized support –
 - In-person 1 hr site visit & personalized site report: 1,600 enrollees @\$450 = \$720,000
 - Follow up phone calls and consultations: 1,600 enrollees @ \$25 = \$40,000
- In-Kind Incentives for program participants –
 - Enrollment Incentives (coupons, free resources, discounts): 1,600 enrollees @ \$320 = \$512,000 value
 - Certification Benefits: 500 certifications @ \$65/certification = \$32,500 value
- Supporting the Green Economy: income earned by arborists and landscape professionals listed in directory = \$1,126,282 value

TOTAL 2022 PROGRAM VALUE TO 4-COUNTY SERVICE AREA = \$14,100,000

PROPORTIONAL VALUE TO CLACKAMAS COUNTY (13% OF TOTAL) = \$1,833,000

PROPORTIONAL VALUE TO WILSONVILLE (5% OF COUNTY TOTAL) = \$91,650

Exhibit A**Program Budget for Wilsonville – FY2023-24**

FY2023-24 BUDGET FOR WILSONVILLE	
Personnel Costs	Total Cost
Program Management - IMPLEMENTATION	\$2,600
Program Support - IMPLEMENTATION	\$2,740
Professional Services and Technology	
Outreach & Technician Training (included in Program Management costs)	\$190
Website & Database Updates and Maintenance	\$150
Diversity Equity and Inclusion Initiatives	\$150
Hardware, Software and Hosting	\$40
Materials/Travel	
Mileage reimbursement	\$10
Other Materials: office supplies, volunteer appreciation, etc	\$10
Printing	\$20
Native Plant Discount Flyer	\$120
Site Assessment Cost	
Site Assessments (included above in Program Management costs)	\$1,800
Site Materials (resource packets, signs, certification stickers)	\$560
SUB-TOTAL	\$8,390
Admin/Overhead	\$1,260
TOTAL	\$9,650

FY23-24 Clackamas County funding sources:

- *Clackamas Soil and Water Conservation District (CSWCD) - \$48,000*
- *WES Riverhealth - \$18,135*
- *Oak Lodge Water Services (OLWS) - \$8,000*
- *City of Lake Oswego - \$48,592*
- *City of Milwaukie - \$7,500*
- *City of West Linn - \$9,000*

FY2024-25 BUDGET FOR WILSONVILLE	
Personnel Costs	Total Cost
Program Management - IMPLEMENTATION	\$2,677
Program Support - IMPLEMENTATION	\$2,965
Professional Services and Technology	
Outreach & Technician Training (included in Program Management costs)	\$195
Website & Database Updates and Maintenance	\$155
Diversity Equity and Inclusion Initiatives	\$155
Hardware, Software and Hosting	\$38
Materials/Travel	
Mileage reimbursement	\$12
Other Materials: office supplies, volunteer appreciation, etc	\$12
Printing	\$25
Native Plant Discount Flyer	\$125
Site Assessment Cost	
Site Assessments (included above in Program Management costs)	\$2,000
Site Materials (resource packets, signs, certification stickers)	\$600
SUB-TOTAL	\$8,959
Admin/Overhead	\$1,341
TOTAL	\$10,300

FY2025-26 BUDGET FOR WILSONVILLE	
Personnel Costs	Total Cost
Program Management - IMPLEMENTATION	\$2,750
Program Support - IMPLEMENTATION	\$3,001
Professional Services and Technology	
Outreach & Technician Training (included in Program Management costs)	\$200
Website & Database Updates and Maintenance	\$160
Diversity Equity and Inclusion Initiatives	\$160
Hardware, Software and Hosting	\$42
Materials/Travel	
Mileage reimbursement	\$15
Other Materials: office supplies, volunteer appreciation, etc	\$15
Printing	\$28
Native Plant Discount Flyer	\$130
Site Assessment Cost	
Site Assessments (included above in Program Management costs)	\$2,060
Site Materials (resource packets, signs, certification stickers)	\$660
SUB-TOTAL	\$9,221
Admin/Overhead	\$1,388
TOTAL	\$10,609