



New \$70M Project a WIN for Wilsonville

San Francisco-based Twist Bioscience is expanding to Wilsonville, boosting the local economy with one of the Portland metro area's largest capital investment projects of 2021.

Twist is investing more than \$70 million in building improvements and equipment at the 190,000 square-foot ParkWorks Industry Center. The former Xerox campus will house what Twist is billing "the factory of the future," where it will manufacture synthetic DNA.

Permitting is already underway, as the company plans to begin production next summer. Twist intends to hire 200 employees in its first year of operations. Once scaled to full capacity, Twist anticipates providing about 400 family-wage jobs in Wilsonville.

Founded in 2013, Twist Bioscience provides synthetic DNA to companies and research institutions who use that DNA to engineer new medicines, store digital data, identify disease genes, develop beneficial traits for crops and create fragrances, flavors and biomaterials for clothing.

The process of developing synthetic DNA has recently been revolutionized by Twist. The company discovered a method of miniaturizing the chemistry, increasing cost effectiveness while reducing chemical use by 99.8%. No bio-hazardous materials are used on site.



California's Twist Bioscience is investing \$70 million to transform the 190,000-square-foot ParkWorks Industry Center (bottom) into a state-of-the-art factory that manufactures synthetic DNA. The move is expected to bring 400 new family-wage jobs to Wilsonville.

"It is an environmentally-friendly process," said Senior VP of Corporate Affairs Angela Bitting during an August presentation to the Wilsonville City Council.

She noted that the company's manufacturing process uses a closed system; all waste is captured and processed outside of city limits. This protects the City's water systems and requires no industrial pretreatment permitting.

Notably, Twist has helped scientists better understand and combat COVID-19. The company has created synthetic RNA controls from several sequence variants of the SARS-CoV-2 virus. These synthetic controls broaden access for scientists to safely study

Continued on Page 2

Mayor's Message

Share Your Time and Expertise; Join a City Board or Commission

Healthy, well-functioning cities rely on unsung heroes who selflessly volunteer their time to study, prepare, conduct research, attend meetings, innovate and recommend new programs and policies to the City Council.

In Wilsonville, we are very fortunate to have many bright, engaged community members serving on our boards and commissions. They offer guidance, ideas and oversight, enhancing our ability to serve residents, businesses and visitors effectively.



Soon, I am interviewing candidates to fill 10 open seats on four of the City's boards; new terms begin in January.

I'll strive to identify people who share my passion, who accurately represent Wilsonville's diverse population and who support our vision of Wilsonville as a clean, green community for all.

If you are civic-minded, and have the time and inclination to lend your unique expertise and life experience, I encourage you to apply before the 5 pm deadline on Monday, Nov. 15.

Every application is forwarded to each City Councilor for review. I read every application and strive to interview at least 75 percent of candidates. Then I'll recommend appointments, which are ratified by a City Council vote.

Here are the boards on which seats are available:

The Budget Committee (two open seats) consists of our five City Councilors and five residents serving three-year terms. Each spring, the committee reviews the annual fiscal year budget submitted by the City Manager, and recommends adjustments before the budget is adopted by City Council.

The Planning Commission (two open seats) is a seven-member panel responsible for making recommendations to the City Council on all legislative land-use and planning matters. The commission also fulfills the role as the City's Committee for Citizen Involvement (CCI) that conducts work sessions and informal public meetings intended to encourage an exchange of ideas without the formality of public hearings. Commissioners serve four-year terms.

The Development Review Board (three open seats) controls the quality of the built environment by ensuring development applications meet City code requirements and are informed by citizen input before construction projects are approved to move forward. Term length is two years.

Kitakata Sister City Advisory Board (three open seats) members serve as ambassadors of our cultural exchange program with Kitakata, Japan. Members advocate for and support program activities, maintain relationships with delegates from Kitakata and promote a positive image of the program locally and abroad. Members serve three-year terms.

I should note that you can apply to serve on other City boards even though new members aren't currently being recruited. The City Recorder accepts applications year-round to be reviewed when a seat becomes available.

If you're looking for a new way to support the community, I encourage you to apply at ci.wilsonville.or.us/boardsapp. You can contact Kim Veliz, our City Recorder, at 503-570-1506 or veliz@ci.wilsonville.or.us, if you have questions.

Julie Fitzgerald, Mayor

SMART's Bus on Shoulder Pilot Gets People Moving

If you have ever been stuck in traffic on I-5, wishing for a way to magically bypass congestion, it's about time to jump on a SMART bus and get moving.



Wilsonville's South Metro Area Regional Transit (SMART) and the Oregon Department of Transportation (ODOT) have launched a one-year "Bus on Shoulder" pilot program that allows SMART's 2X express buses to and from the Tualatin Park & Ride to drive on the shoulder in both directions between Elligsen Rd. and the I-205 interchange when I-5 traffic slows below 35 miles per hour.

The result of this innovative partnership is a safe, low-cost way to address congestion and create a faster, more reliable commute for SMART passengers.

"We're excited to introduce the Bus on Shoulder service," SMART Transit Director Dwight Brashear said. "Commuters to and from Tualatin will enjoy a free and relaxing ride that is more efficient and

environmentally-friendly than driving."

The "Bus on Shoulder" concept is more prevalent in other parts of the country. Minneapolis, for example, offers the service on more than 200 miles of highway. Ohio, California, Florida and Illinois have also had success with the program.

Closer to home, C-TRAN in Clark County, Wash., allows buses to drive on the I-205 shoulder. When C-TRAN recently partnered with ODOT to expand Bus on Shoulder service into Oregon over the I-205 Glenn Jackson Bridge, it got Brashear's attention.

"If C-TRAN is allowed to travel on the shoulder of the Interstate in Oregon, why not SMART?" said

Continued on Page 3



Shred-It Day! Dispose of Sensitive Paper Documents on Nov. 6



The City is once again partnering with Shred-it this year to provide a secure way for residents to dispose of sensitive documents.

On Saturday, Nov. 6, residents can bring paper materials for shredding in the City Hall parking lot,

9 am-2 pm.

Shred-it has "contactless" protocols in place to prevent the transmission of COVID-19. Residents are invited to drive up and unload paper items only into large recycling bins. Each bin is rolled to the nearby truck when full, and contents are immediately shredded.

There is no charge for this shredding event. Instead, the City is asking participants to make a cash or check donation on site to Wilsonville Community Sharing for the benefit of our neighbors experiencing need.

Paper Shredding Event
Sat, Nov. 6, 9 am-2 pm
City Hall Parking Lot
29799 SW Town Ctr. Loop E.

City of Wilsonville
29799 SW Town Center Loop East
Wilsonville, OR 97070

PRSR STD
U.S. Postage Paid
Wilsonville, OR
Permit No. 104

Postal Customer

Factory of the Future

Continued from Page 1

diverse strains of the virus without being exposed to “live” virus samples.



WIN for the Win

Twist officials say the eight-year-old company was drawn to Wilsonville by its proximity to an airport, a culture and lifestyle similar to the Bay Area, and nearby two- and four-year colleges than can supply a pipeline of future employees.

The Wilsonville Investment Now program (WIN) also played a role. Because Wilsonville does not offer Enterprise Zones, the WIN program was established by the City's Economic Development staff to help Wilsonville attract high-value industry and, with it,

higher-wage jobs. Established less than one year ago, WIN quickly delivered on its promise.

A tax incentive program, WIN establishes Twist's four-acre site as new urban renewal district and freezes the current property tax revenue. If Twist meets WIN criteria around capital investments and job creation, the company receives a partial property tax rebate that is based on the value of the improvements.

If paying property taxes in full and on time, Twist would qualify for a \$597,000 rebate in the first year and additional rebates for the next six years.

“WIN is a strategic application of an urban renewal program,” explained Chris Neamtzu, the City's Community Development Director. “The building IS the renewal area; the rebate targets the exact location where the corporate investment is being made.”

This type of development is particularly desirable, Neamtzu noted, because no road or infrastructure improvements are required and no additional burden is placed on the school district and fire department (which were both supportive of the program).

Both Twist and Wilsonville hope the company's investment spurs other bioscience firms to locate nearby. “Ideally, Twist is a catalyst that precipitates a cluster of industry, innovation, and technology to further strengthen our local economy,” Neamtzu said.

The majority of jobs are in manufacturing operations, which offer family wages without requiring a college degree. The company also expects to hire professionals in engineering, information technology, finance, facility operations and human resources, Bitting said. Current job postings are listed at [twistbioscience.com/company/careers](https://www.twistbioscience.com/company/careers)

The Silliest of Send-Offs for Retiring Library Director

Outgoing Library Director Pat Duke was the recipient of an unusual retirement gift—a silly-string shower from Wilsonville Library staff and volunteers—as he reached the end of his 25-year tenure in September.

The Oregon Library Association's 2018 Librarian of the Year leaves behind a wonderful legacy as the Library's curator. Duke oversaw a \$1 million library renovation in 2018 and has been a tireless advocate of life-long learning and youth literacy.

Duke's support for the non-profit Dolly Parton's Imagination Library has resulted in more than 60,000 books being delivered to Wilsonville children free of charge. He has also worked to get the program up and running in several other communities throughout Oregon.

“Pat treated his Library colleagues and patrons like family,” Assistant City Manager Jeanna Troha said. “We consider the Library to be the heart of our community, and Pat made Library visitors feel welcome and at home.”



8200 SW Wilsonville Road
503-682-2744
WilsonvilleLibrary.org



Tranquil Park StoryWalk

The Library has teamed up with Wilsonville Parks & Recreation to combine two great activities: story sharing and outdoor exploring!

Join Outreach Librarian Deborah Gitlitz at Tranquil Park on Tuesday, Nov. 9, at 1 pm. Meet at the corner of Parkwood Lane and Brown Road.

Together we'll enjoy a short outdoor program before heading off to explore the trail.

[WilsonvilleLibrary.org/Storywalk](https://www.WilsonvilleLibrary.org/Storywalk)

“Our Solar System” Talk

Dr. Bill Thierfelder presents the first in a three-part series that takes us on an imaginary voyage from the Sun to the outer reaches of the Oort Cloud. Part One focuses on the “rocky planets.”

Wednesday, Nov. 3, 11 am-12:30 pm

Sign up to receive the Zoom meeting code at [WilsonvilleLibrary.org/classes](https://www.WilsonvilleLibrary.org/classes).

Genealogy Club Meets Online

Join a growing group of genealogists of all levels from the Wilsonville area to discuss genealogy tips, tricks, and research.

Librarian Malia Laughton moderates these discussions. New members are welcome!

Monday, Nov. 15, 1-2:30 pm

Sign up to receive the Zoom meeting code at [WilsonvilleLibrary.org/GC](https://www.WilsonvilleLibrary.org/GC)



November Library Closures

The Library is closed on the following dates in November:

- Thursday, Nov. 11 (Veterans Day)
- Thursday, Nov. 25 (Thanksgiving)
- Friday, Nov. 26 (Thanksgiving)

Patrons may renew items by selecting “My Account” on the Library website or calling the Library's automated phone service at 503-659-8634.

[WilsonvilleLibrary.org](https://www.WilsonvilleLibrary.org)

Upcoming Classes and Events



Storytime at the Barn

Dress for the weather and join us in-person at the Stein-Boozier Barn in Memorial Park.

Masks required (ages 5 and up)

Nov. 4 and Nov. 18 at 10:30 am

[WilsonvilleLibrary.org/storytime](https://www.WilsonvilleLibrary.org/storytime)

Teen Online Lounge Event

Friday evening lounge event just for teens!

Friday, Nov. 12, 7-8 pm.

For students in grades 6-12. On Zoom: 901-104-467.

[WilsonvilleLibrary.org/teens](https://www.WilsonvilleLibrary.org/teens)

English Class/Conversation Group

Friendly, informal group where non-native speakers can practice speaking English. Mondays at 6 pm.

Meets on Zoom.

[WilsonvilleLibrary.org/ECG](https://www.WilsonvilleLibrary.org/ECG)

Article Club

Live discussions with our reference staff on Zoom.

“The Day the Dinosaurs Died” by Douglas Preston

Wednesday, Nov. 10, 1-1:30 pm

[WilsonvilleLibrary.org/articleclub](https://www.WilsonvilleLibrary.org/articleclub)

Visit our website for more events:

[WilsonvilleLibrary.org](https://www.WilsonvilleLibrary.org)



SMART Bus on Shoulder

Continued from Page 1

Brashear, who jumped at the opportunity when ODOT officials asked about a developing a program to launch Bus on Shoulder service in Wilsonville.

How it Works

When traffic drops below 35 miles per hour between Elligsen and the I-205 interchange, SMART buses may bypass traffic by moving on the shoulder, where they may proceed up to 15 mph faster than traffic flow.

Buses cannot exceed speeds of 35 mph and must merge into travel lanes at least 1,000 feet before the shoulder ends. Buses must yield the shoulder for bicyclists and to avoid emergency vehicles, road maintenance and disabled vehicles. Motorists may not follow SMART buses.

The program offers passengers a mobility advantage during peak hours to incentivize people to consider public transit (now with free Wi-Fi!) as a low-stress, viable commuting option.

Implementation

After a program of community awareness, driver

training and on-road testing began in mid-October. SMART and ODOT targeted Nov. 1 to introduce passenger service. Initial feedback from community stakeholders, local businesses and law enforcement has been positive.

Bus on Shoulder allows a low-cost, low-effort way for passengers to safely through congestion points faster. Implementation cost is low, as required highway striping, pavement legends and signage were installed during a recent repaving project.

Bus on Shoulder is scheduled to operate for one year, and can be extended an additional two years if successful. ODOT will be measuring and analyzing impacts to safety, infrastructure, transit performance and ridership.

Brashear is optimistic that the program is here to stay.



The Bus on Shoulder pilot program is being implemented on 2X routes between the Wilsonville Transit Center and Tualatin Park & Ride.

“A successful pilot will maintain a stellar safety record, be reliable, and attract both transit dependent users and choice riders alike,” Brashear said. “I expect Bus on Shoulder to become a permanent improvement that offers another compelling argument to support mass transit.”

Start Raking! Fall Leaf Drop at City Hall Set for Nov. 20

In partnership with Republic Services, the City hosts the annual Leaf Drop-Off Day on Saturday, Nov. 20, 9 am–2 pm.

Wilsonville residents are invited to drop-off leaves only — no other yard debris, please! — at the City Hall parking lot, 29799 SW Town Center Loop East.

Leaf Drop-Off Day
Sat, Nov. 20, 9 am-2 pm
Wilsonville City Hall
29799 SW Town Center Loop E.

City Public Works employees will be on hand to assist residents with disposing

of leaves into large dumpsters provided by Republic Services.

While no fee is charged for dropping-off leaves, the City suggests that participants bring a cash or check donation for Wilsonville Community



Sharing, operator of the community food bank and social-services referral agency. Learn more at WilsonvilleCommunitySharing.org.

The City recommends that residents use large paper bags available from local hardware stores that can be recycled with leaves — rather than using plastic bags that are not recyclable.

The leaf-collection event is a component of Republic Services’ franchise agreement for solid-waste collection and disposal services with the City of Wilsonville.



Apply to Civics Academy by Nov. 5

The deadline to apply for the Wilsonville Civics Academy has been extended until Nov. 5.

The City’s annual civic engagement program meets monthly, and includes presentations from City staff and other information to prepare participants for future service with City boards or non-profit agencies.

Participants meet with elected officials and can participate in optional day trips to the State Capitol and the Coffee Creek Correctional Facility.

The online application is available in English and Spanish at ci.wilsonville.or.us/academy.



503-682-7790 RideSMART.com
28879 SW Boberg Road



Be Safe. Be Seen. Be SMART.

With daylight savings time ending on Sunday, Nov. 7, SMART is promoting safety and visibility for commuters.

On Monday, Nov. 8, SMART is handing out safety lights and reflective leg/arm bands at the Wilsonville Transit Center (while supplies last).

Stop by, say hello, and pick up these free items that help you stay more visible on roadways.



SMART Annual Bus Road-eo

Each year SMART’s skilled, experienced bus operators undertake additional training to support safe and efficient travel. In addition to classroom training throughout the year, a *Bus Rodeo*, or skill challenge, is set up to simulate real-life obstacles and allow drivers to fine tune their skills.



All SMART buses now have Wi-Fi

For the past several weeks, a crew has been on site at SMART installing equipment and validating systems. The new technology package includes Wi-Fi, automatic passenger counters, vehicle locating via Global Position Software (GPS) and automated stop announcements. The work is now complete and passengers can enjoy free Wi-Fi while commuting and traveling in and around Wilsonville on SMART buses.



City's Newest Play Area at Memorial Park is a Natural Paradise for Kids

The City is unveiling Wilsonville's first nature play area at an open house on Wednesday, Nov. 17, at 10 am.

Integrated into the adjacent forest, the play area is located on the south side of lower Memorial Park, past the River Shelter on the main park road.

"We're excited to provide kids with a new amenity imagined, designed and built by the Parks Team to support the Memorial Park Master Plan," said Parks Supervisor Dustin Schull. Unique among Wilsonville play-grounds, the play area was built of natural components such as plants, logs, sand, mud, boulders, trees and wooden carvings. It features 11 different play components.

Nature play aids in the intellectual, physical and emotional development of young people. Children move actively, activate their imaginations, interact and connect with the environment.

The nature play area was completed at a cost of \$40,000, and substantially paid for with a \$30,000 grant from the Wilsonville-Metro Community Enhancement Program.



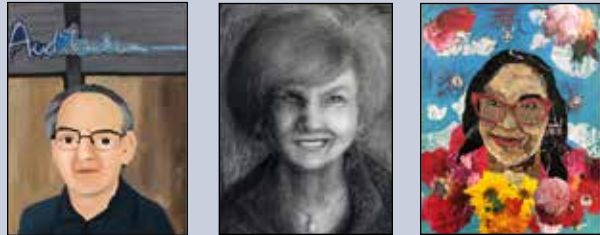
Nature Play Area Open House
Wed., Nov. 17, 10 am
Memorial Park
8100 SW Memorial Dr.

Arts & Culture Council Pivots to Online Gallery to Unveil Community Portraits

Due to concerns about COVID safety, the Wilsonville Arts & Culture Council canceled an October unveiling ceremony for its Wilsonville Community Portrait Project.

Instead, WACC is unveiling the portraits virtually at wilsonvillearts.org on Saturday, Nov. 20.

Viewers will meet Wilsonville's "Helpers," who make the community special. The site tells their stories and showcases portraits created by art students in Wilsonville's public schools.



City Set to Fund New Community Enhancement Projects

The City's annual campaign is underway to fund new projects that enhance Wilsonville.

The Wilsonville-Metro Community Enhancement Program funds a wide array of projects. Individuals and organizations may nominate projects until Jan. 28, 2022. Program criteria may be found online.

Preference is awarded to projects that:

- Do not require more than \$20,000 in funds.
- Meet multiple program criteria.
- Include a financial or in-kind match
- Benefit diverse or underserved populations

The City's Community Enhancement Committee invites community members to:

- Spearhead a community-led nomination by attending one of two virtual information sessions; noon or 6 pm on Dec. 2 via Zoom: <https://us02web.zoom.us/j/89859326780>.
- OR share a community enhancement ideas on an

"ideas board" at Let'sTalkWilsonville.com by Jan. 3, 2022.

Applications must be submitted online by 5 pm on Jan. 28, 2022. The deadline allows ample time for applicants to prepare proposals and attend a required pre-application meeting.

To learn more and/or to initiate a funding request, contact Zoe Mombert, Assistant to the City Manager, at 503-570-1503 or mombert@ci.wilsonville.or.us.



"Beauty and the Bridge" interpretive signs at the I-5 Underpass were funded by the Community Enhancement Program.



Parks & Rec Administration
29600 SW Park Pl.
503-783-7529

Community Center
7965 SW Wilsonville Rd.
503-682-3727



'Tis the Season for Winterfest 2021

This year's Winterfest plans are still being finalized; the decision about whether to host an in-person tree lighting event had not been made at press time.

We do know that several beloved holiday favorites are certain to return including, "Letters to Santa," a gingerbread scavenger hunt, virtual contests and more!

The holiday tree lights at Town Center Park are being illuminated on Saturday, Nov. 27, for the community to enjoy. Visit the Parks and Rec Facebook page and at WilsonvilleParksandRec.com/Winterfest for and up-to-date schedule of holiday activities.

Holiday Toy Drive

This year's annual Toy Drive is underway. Drop off a new, unwrapped, toy under the holiday tree at the Parks and Recreation Admin. Building weekdays between 8 am and 5 pm until Dec. 8. Toys may also be dropped off at Wilsonville Orthodontics (9475 SW Wilsonville Rd.) during business hours. Donated toys are being collected and distributed to families in need.

Fill a Stocking for a Wilsonville Senior!

The Parks and Recreation Department is enlisting the community's help to fill and donate stockings for seniors enrolled in the Community Center's Home Delivered Meal Program. Filled stockings can be donated to the Parks & Recreation Admin. Building Nov. 1-Dec.10.

Fun items to include in stockings include small games/puzzles and/or keepsake ornaments. Useful gifts include personal care items, greeting cards/stamps, gift cards to local grocery stores, coffee/tea/cocoa and wrapped snacks.

Call Sadie Wallenberg at 503-570-1526 or visit WilsonvilleParksandRec.com/SeniorStocking for more information.

Community Center Programming Updates

The Community Center is once again open for drop-in programs and a limited number of in-person classes.

Photography, Pinochle & Cribbage, Bridge, BINGO and Ladies Afternoon Out have all returned; staff are welcoming other drop-in groups as soon as they feel comfortable returning.

The popular Healthy Bones and Balance class taught by Personal Trainer Brad Moore is scheduled to return to the Community Center on Nov. 15. The class includes circuit training, aerobics and flexibility work. Two levels are offered, standard and advanced.

The Community Center is proud to present an informative "Life 101" lecture series this winter. While there is no charge to attend, participants are asked to contact us at 503-682-3727 to pre-register.

A Fall Prevention Workshop is being presented by Dr. David Duemling D.C., P.C. on Tuesday, Nov. 30 from 11-11:45 am. Participants are invited to join Dr. Dave to determine their risk of falling and becoming injured. The workshop features a risk assessment, and demonstrations of mobility and strength-building exercises.

Upcoming Classes and Events

Life 101 Series- ID Theft and Scams
Tues., Nov. 9
10:45-11:45 am
Community Center
Call to pre-register:
503-682-3727

Oil Painting: Seaside Harmony
Sat. Nov. 13
10 am-2 pm
Parks and Rec. Admin
Cost: \$50

Nature Play Grand Opening
Wed., Nov. 17
10 am
Memorial Park Nature Play Area

Holiday Lights Begin
Sat., Nov. 27
Town Center Park

Letters to Santa Station
All Ages
Weekdays, Nov. 29-Dec. 23
8 am-5 pm
Parks and Rec. Admin Bldg.

Visit our website for more events:
WilsonvilleParksandRec.com

Lose an item in a City Park?
Our lost and found (at
29600 SW Park Pl.) is open M-F
8 am-5 pm. You can also call 503-783-7529.

POLICE CHIEF'S CORNER

There Are a Few Precautions You Can Take to Combat a Recent Rise in Petty Theft Incidents

One of the Wilsonville Police Department's current concerns is the recent increase in incidents of petty theft, including car break-ins and package theft.

As we move closer to the holidays, package thefts typically go up. We took 70 theft reports in August and another 51 in September. It's difficult to determine why these numbers fluctuate, but we do know that organized crews can come in and commit a large number of crimes in one night.

In response, we have adjusted our shift coverage to increase patrols when these crimes are occurring. We actively patrol residential neighborhoods overnight. In October, one of our officers intercepted a crew casing vehicles. After a short foot pursuit, we apprehended a suspect who had outstanding warrants.

Car prowlers and porch thieves are opportunistic criminals that seek to quickly grab packages or items from a vehicle. Theft can be completed in a minute or less, at any time of day and in a variety of settings. Many car break-ins occur overnight, between 10 pm and 4 am; the most common items taken are wallets, luggage, gym bags, money, cell phones and chargers.

There are simple prevention measures you can take in order to help reduce the risk of having your



Police Chief Rob Wurpes

car broken into or having packages stolen. These include:

- Keep your car locked and free of items — such as gym bags, backpacks, purses, wallets, briefcases, laptops, cell phones and loose change — in plain view.
- Place valuables in your trunk before you arrive at your destination. Lock your trunk with a valet key, if possible, so a thief can't easily pop open the trunk from the car's interior.
- Remove garage door openers, key cards and keys so that a prowler cannot easily steal your car or open a door to commit a burglary. Keep keys with you, not hidden in your vehicle.
- Before departing your car, always remove the keys, roll up the windows, lock the doors and set the alarm (if you have one).

To deter porch theft, take the following precautions:

- If you are frequently away when packages are delivered, consider having packages delivered to a post office box, or lockers at UPS, FedEx, or Amazon as examples.
- Consider purchasing a porch locker and secure locking bags for deliveries, which have become more affordable and are widely available.
- Install motion-sensor lights
- Install visible video cameras. Several affordable, easy-to-use systems can keep an eye on things and serve as a deterrent.
- Strategically place plants or other decorative porch items to allow delivered packages to be



Do not leaving backpacks, gym bags or other similar items visible in cars to tempt would-be car thieves, Wilsonville's police chief cautions.

hidden from view, and less visible to passers-by.

- Require a signature to take delivery of packages.

If your car is broken into or a package is stolen, report the crime to the Wilsonville Police. For crimes in progress, call 9-1-1; if the break-in has already occurred, contact the police non-emergency dispatch number at 503-655-8211.

Keep an eye out in your neighborhood. We are frequently assisted by community members who report seeing unusual activity and alerting us.

I hope this information helps you and your neighbors prevent car break-ins and package thefts from occurring. If they do, though, we'll be here 24 hours a day, 365 days of the year to help you out.

Chief Robert Wurpes

Notable Actions: City Boards and Commissions

City Council	Action	What it Means
Oct. 4	At a public hearing, on first reading, the Council approved the Wilsonville Town Center Streetscape Plan.	The Streetscape Plan establishes design guidelines for Town Center sidewalks and streets to create a distinct look and feel for future Town Center streets.
Oct. 4	At a public hearing, on first reading, the Council approved the Middle Housing in Wilsonville Project.	The project updates City development guidelines to comply with new State law and to better meet current and future housing demand.
Oct. 4	At a public hearing, on first reading, the City Council approved a zone map amendment for 1.4 acres in the Villebois Village Center.	The change from 'public facility' to 'village' is consistent with intentions set forth in the Comprehensive Plan and Villebois Village Master Plan.
Oct. 4	The City Council approved a contract with C.R. Contracting LLC to repair damaged concrete and apply a slurry seal that protects the WES Transit Station Parking Lot asphalt.	The project accommodates the City's growing fleet of Compressed Natural Gas (CNG) vehicles.
Oct. 4	The Council approved a new three-year contract with The Leo Company.	The Leo Company is providing governmental relations consulting and emergency preparedness training.
Sept. 21	The Council approved a \$475,000 contract with Romtec Inc. to replace and upgrade the central restroom facilities at Memorial Park.	The project is providing six (6) new individual, all-gender bathrooms that nearly double existing capacity to support more than 100,000 annual park visitors.
Sept. 21	The Council awarded a contract to McCoy Freightliner for the purchase of a 5-yard vacuum/jetting cleaning truck.	The truck improves the City's storm water maintenance capabilities and providing additional flexibility, redundancy and resilience to support the City's efforts to keep sewer and storm water lines clean and functioning.
Sept. 21	The Council amended a ground lease agreement with the Willamette Water Supply Program (WWSP).	The amendment modifies the list of infrastructure improvements to be made in Wilsonville to offset the disruption to be caused by the WWSP's installation of a 66-inch water pipeline.
Sept. 21	Also, the Council approved a resolution that adds Kimberly Graves to the City's list of eligible pro tem Municipal Court judges.	The action allows Graves to preside over the City's municipal court on occasions if/when Municipal Court Judge Fred Weinhouse is unavailable to serve in this capacity.



TVF&R Opens New Fire Station in Charbonneau Neighborhood

Tualatin Valley Fire & Rescue's Station 54, serving Charbonneau and Wilsonville, is now in service. The station is located within the Willamette Professional Building on Miley Rd., providing quick access to Interstate 5.

Firefighters have been busy unpacking and settling into the new 2,592-square-foot station while responding to service calls. The station's smaller footprint reflects TVF&R's dynamic service delivery model, as most service calls are medical in nature.

The station houses a two-person crew operating Rescue 54, a medical transport unit staffed with two firefighter paramedics who can also respond to fires. The station features individual sleeping quarters and comfortably accommodates all genders.

District leadership has sought a permanent site to serve Charbonneau for several years. When a long-term option could not be located, the fire district leased space within the Willamette Professional Building while continuing to identify a more permanent location.

For more information, visit tvfr.com.

Fire Agency Deploys 60 New Cardiac Monitor-Defibrillators

In October, Tualatin Valley Fire & Rescue deployed 60 new LIFEPAK 15 cardiac monitors replacing cardiac monitor-defibrillators that were reaching the end of their useful service life.

Cardiac monitor-defibrillators are an essential tool used by firefighter paramedics and single-role paramedics to evaluate, treat, and manage cardiac emergencies in the field.

The cardiac monitor-defibrillator replacement was funded from TVF&R's EMS equipment budget and was included in the FY2021 budget process.

Stay Informed

- Sign up to receive City news:
- Follow City of Wilsonville: Facebook, Nextdoor and Twitter
- Watch City Council meetings: Online: ci.wilsonville.or.us/WilsonvilleTV Comcast/Xfinity: Channel 30 Ziplly Fiber: Channel 32



Draft Proposal for Arts, Culture and Heritage Commission Open for Public Comment

The City has drafted a proposal to form an Arts, Culture and Heritage Commission in Wilsonville.

Public comment may be provided until Monday, Nov. 8, at 5 pm. To review and comment, visit ci.wilsonville.or.us/ACHcommission.

Creating an Arts, Culture and Heritage Commission is a City Council 2021-23 Goal and a key component of the City's Arts, Culture and Heritage Strategy (ACHS), which was adopted by City Council in Nov. 2020.

The proposed commission would provide recommendations to City staff and elected officials arts, culture and heritage programs and oversee implementation of ACHS recommendations, including developing a public-art program and advancing a

community cultural arts center or facility.

The City Council is scheduled to consider the draft proposal and public comments at the Monday, Nov. 15, 5-7 pm, work session. If directed, staff would initiate a resolution to create the commission at the Dec. 20 City Council meeting.

Cultural community consultant Bill Flood was retained by the City to undertake research that helped inform how a commission would be structured and the kinds of work programs to be utilized.

The ACHS was developed with the guidance of a 42-member ACHS Task Force. Its findings and recommendations are designed to support the development of a sustainable, long-term plan yields a more vibrant cultural scene in Wilsonville. For more information, see ci.Wilsonville.or.us/ACHS.

Aurora State Airport Master Planning Set to Begin with Nov. 16 PAC Meeting

The Oregon Department of Aviation (ODA)'s process to develop a master plan for the Aurora State Airport is getting underway with a virtual meeting of the Planning Advisory Committee (PAC) on Tuesday, Nov. 16, 3-5 pm.

Aurora Airport PAC Meeting
Tue, Nov. 16, 3-5 pm
Get link at ci.wilsonville.or.us/aurorastateairport

City Councillor Charlotte Lehan and Community Development Director Chris Neamtzu represent the City of Wilsonville on the PAC.

The meeting provides the first opportunity for the PAC, community, neighbors, and other project stakeholders to learn about the project and planning for the airport over the next 20 years.

City officials have already expressed concern that the ODA is attempting to circumvent the public process by showcasing its plan to spend \$33 million to \$38 million dollars in taxpayer funds to subsidize the airport's expansion and a runway extension. Additionally, ODA wants to hire more state workers to provide more services to private-sector interests at the airport.

For more information, visit: ci.wilsonville.or.us/AuroraStateAirport.



Build a Better Backyard Habitat

Learn the basics of wildlife garden-making at a free class on Saturday, Nov. 6, from 10:30 to noon at the Stein-Boozier Barn at Memorial Park (8300 SW Memorial Dr.)

Presented by Habitat Design PDX, the class offers a few of the secrets to establishing a healthy and vibrant garden that utilizes native plants to support the health of region's unique plants and wildlife.

Wildlife Garden-Making Class
Sat, Nov. 6, 10 am-noon
Stein-Boozier Barn, Mem. Park
8300 SW Memorial Dr.

Participation is limited to 25 people. Masks and social distancing are required for participants. The open-air venue is not heated, so it is recommended that you dress appropriately for the weather.

To reserve a seat, e-mail contact@habitatdesignpdx.com.

Dinner & Live Music Series Scheduled to Return to Butteville Store on Nov. 6

Dinner & Live Music at the Butteville Store is scheduled to return on Nov. 6 and continue on the first and third Saturday of each month this winter.



Reservations are required, and may be made by calling 503.678.1605 or 971.400.6677 or by emailing halfpintbrothers@yahoo.com
An Oregon Parks and Recreation Department facil-

ity, the Butteville Store is requiring patrons and staff to be vaccinated and the dining room is limited to 36 seats. Additional details were unavailable at press time.

Musicians scheduled to appear include:

- Southern Nights Trio (Nov. 6)
- Phoenix Duo (Nov. 20)
- Pipedance (Dec. 4)
- Corral Creek Bluegrass (Dec. 18)

The Butteville Store's Dinner & Live Music series is provided by Half Pint Brothers, makers of hand-crafted ice cream. View the store's daily ice cream and lunch menus at butteville.org/butteville_store.html



Donate a New, Unwrapped Toy

This year's annual Holiday Toy Drive has begun. New, unwrapped, toys may be dropped under the holiday tree at the Parks and Recreation Admin. building any weekday between 8 am and 5 pm until Dec. 8.

Toys may also be dropped off at Wilsonville Orthodontics (9475 SW Wilsonville Rd.) during business hours.

All donated toys are being collected and distributed to local families in need.

For more holiday-themed programs and activities, including "Letters to Santa," visit WilsonvilleParksandRec.com.

City Calendar

For the most up-to-date information, visit ci.wilsonville.or.us/calendar

NOVEMBER

- 1 Mon • City Council Mtg. at City Hall & virtual 5 pm-Work Session, 7 pm-Meeting
- 2 Tue • Municipal/Traffic Court 5 pm, City Hall
- 6 Sat • Paper Shredding Event 9 am-2 pm, City Hall
- 8 Mon • DRB Panel A 6:30 pm, virtual
- 9 Tue • Diversity, Equity, Inclusion Committee Mtg. 6 pm, virtual
- 10 Wed • Tourism Promotion Committee 1-3 pm, virtual
• Planning Commission 6 pm, virtual
• Kitakata Sister City Advisory Board 6 pm, virtual
- 11 Thu • Veterans Day City Offices Closed
- 15 Mon • City Council Mtg. at City Hall & virtual 5 pm-Work Session, 7 pm-Meeting
- 16 Tue • Municipal/Traffic Court 5 pm, City Hall
- 17 Wed • Nature Play Area Open House 10 am, Memorial Park
- 20 Sat • Leaf Drop-Off Day 9 am-2 pm, City Hall
- 22 Mon • DRB Panel B, 6:30 pm, virtual
- 25 Thu • Thanksgiving Day City Offices Closed
- 26 Fri • Thanksgiving Observed City Offices Closed
- 27 Sat • Holiday Lights to be Illuminated dusk, Town Center Park

DECEMBER

- 1 Wed • Tourism Promotion Committee Meeting 1 pm, virtual
• Library Board Meeting 6:30 pm, Wilsonville Library or virtual
- 6 Mon • City Council Mtg. at City Hall & virtual 5 pm-Work Session, 7 pm-Meeting
- 7 Tue • Municipal/Traffic Court 5 pm, City Hall
- 8 Wed • Planning Commission 6 pm, virtual
- 13 Mon • DRB Panel A 6:30 pm, virtual
- 14 Tue • Diversity, Equity, Inclusion Committee Mtg. 6 pm, virtual
- 20 Mon • City Council Mtg. at City Hall & virtual 5 pm-Work Session, 7 pm-Meeting
- 21 Tue • Municipal/Traffic Court 5 pm, City Hall
- 24 Fri • Christmas Eve/Christmas Day Observed SMART, City Offices closed
- 27 Mon • DRB Panel B 6:30 pm, virtual

All dates and times are tentative; check the City's online calendar for schedule changes at ci.wilsonville.or.us/calendar



Vaccine Update

For the up-to-date vaccine news and availability in Clackamas County, visit clackamas.us/coronavirus/vaccine

Wilsonville City Council

The City Council usually convenes on the first and third Monday of the month at City Hall, with work session generally starting at 5 pm and meeting at 7 pm. Meetings are broadcast live on Xfinity Ch. 30 and Ziplly Ch. 32 and are replayed periodically. Meetings are also available to stream live or on demand at ci.wilsonville.or.us/WilsonvilleTV. Public comment is welcome at City Council meetings.



Julie Fitzgerald
Mayor

fitzgerald@ci.wilsonville.or.us



Kristin Akervall
City Council President

akervall@ci.wilsonville.or.us



Charlotte Lehan
City Councilor

lehan@ci.wilsonville.or.us



Ben West
City Councilor

west@ci.wilsonville.or.us



Joann Linville
City Councilor

linville@ci.wilsonville.or.us

City Manager

Bryan Cosgrove
503-570-1504
cosgrove@ci.wilsonville.or.us

Wilsonville City Hall

29799 SW Town Center Loop E
Wilsonville, OR 97070
Phone: 503-682-1011
Fax: 503-682-1015
Web: ci.wilsonville.or.us
E-mail: info@ci.wilsonville.or.us



City Council: 503-570-1501; council@ci.wilsonville.or.us

Police Non-Emergency Dispatch: 503-655-8211